

Aquaplus

MD Series
Magnetic Drive Pumps



**1 Year
Warranty!**

Magnetic Drive Pumps

MD Series - MP Range

Aquaplus MP range of leak-free compact magnetic drive pumps are our best-seller and are used in medical equipment, analysers, constant-temperature baths and surface treatment equipment for chemical feeding.

Features

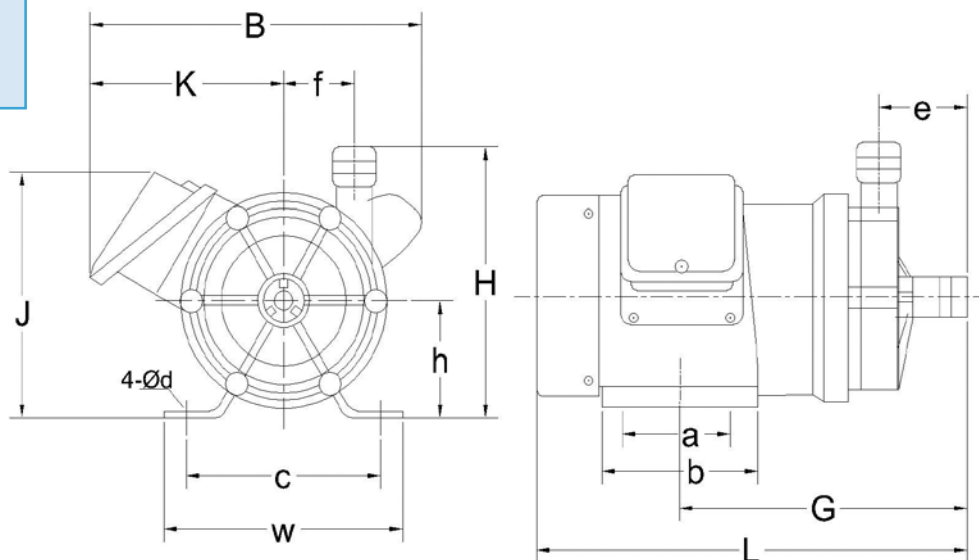
- Zero leakage of pumped fluids
- Highly chemical resistant
- Easy to maintain
- Large range of models
- Option of material types
- Long term reliability

Applications

- Chemical & petrochemical
- Photographic & X-ray processing

- Water treatment
- Food & beverage
- Aquaculture

Dimensions



Model	a (mm)	b (mm)	c (mm)	d (mm)	e (mm)	f (mm)	G (mm)	h (mm)	H (mm)	W (mm)	L (mm)	B (mm)	J (mm)	K (mm)	Weight (kg)
MP6R	30	74	60	5	31	17.3	74	36	83	74	129.5				0.9
MP6RZ	30	74	60	5	31	17.3	74	36	83	74	129.5				0.9
MP10R	30	74	60	5	31	17.3	74	36	83	74	129.5				0.9
MP15R	49	63	68	6	38	23	121	45	100	82	196.5				1.6
MP20R	30	50	68	5.5	38.5	28.5	131.5	56	116	85	209				2.0
MP20RX	30	50	68	5.5	46.5		143	56	130	85	220.5				2.0
MP20RZ	30	50	68	5.5	40	40	134	56	126	85	212				2.0
MP30R	40	64	100	9	48	30	166.5	60	130	120	249.5				3.5
MP30RX	40	64	100	9	48		169.5	60	138	120	252.5				3.5
MP30RZ	40	64	100	9	40	40	151	60	130	120	234				3.5
MP40R	40	64	100	9	48	30	167.5	60	130	120	274		118	60	3.9
MP40RX	40	64	100	9	48		170.5	60	138	120	277		118	60	3.9
MP40RZ	40	64	100	9	48	30	167.5	60	130	120	274		118	60	3.9
MP55R	40	64	100	9	56.5	43	198.5	65.5	161	120	275		140	54	5.4
MP55RX	40	64	100	9	56.5		198.5	65.5	161	120	275		140	54	5.4
MP70R	70	96	108	9.5	55.75	44	177	66	161	142	267	202	142	118	6.0
MP70RZ	70	96	108	9.5	55.75	44	177	66	161	142	267	202	142	118	6.0
MP100R	70	100	110	9	66	44	195.5	74	174	156	322	202	150	118	8.5
MP100RX	70	100	110	9	63		195.5	74	174	156	323	205	167	124	8.5
MP120R	98	130	110	12	80	51	184.5	93	208	140	359	216	187	123	11.0
MP120RM	98	130	110	12	68		175.5	93	208	140	350	216	187	123.5	11.0
MPH400	98	130	110	12	80	51	188	94	209	140	384	230	183	128	14.0
MPH401	130	200	130	12	98	57.5	244	114	247	160	475	230	208	137	17.0
MPH422	200	260	171	14x36	83	65	248	115.5	247.5	260	532.5	260	175	260	24.0
MPH423	200	260	171	14x36	83	65	248	115.5	247.5	260	532.5	260	175	260	26.0

All content is subject to change without notice.

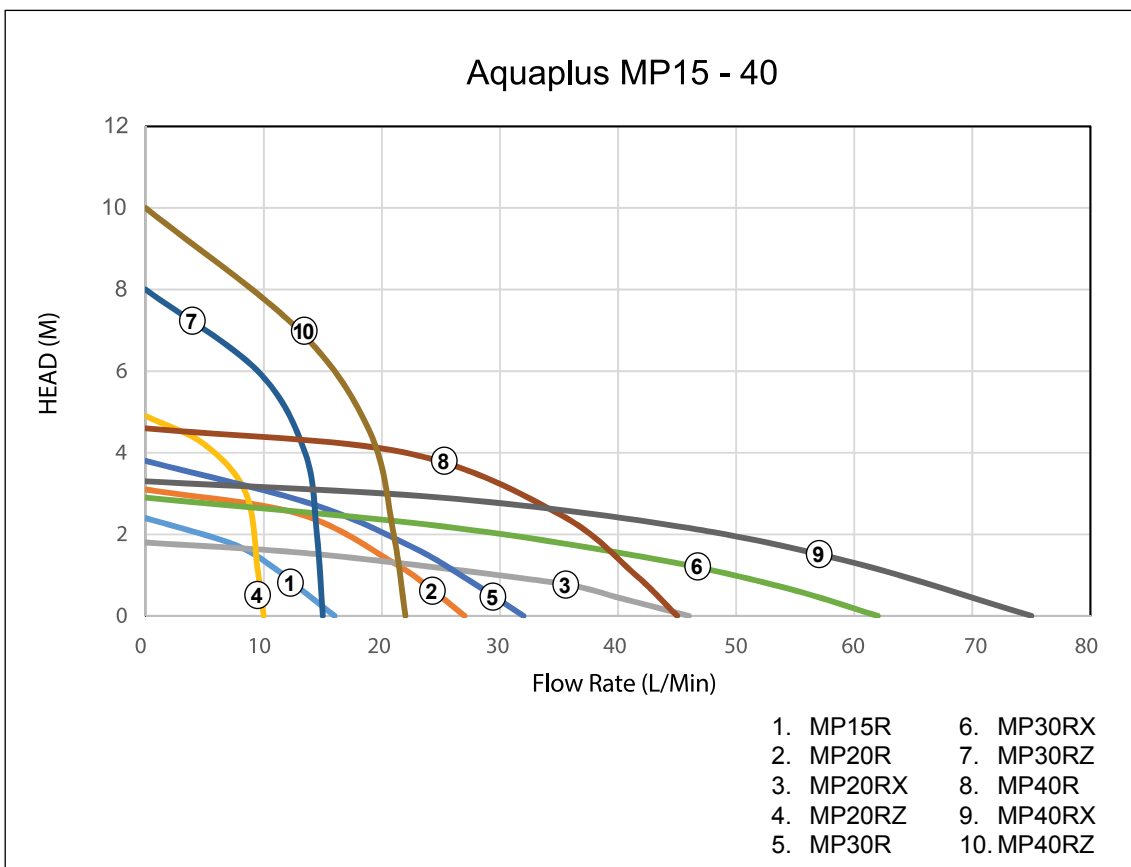
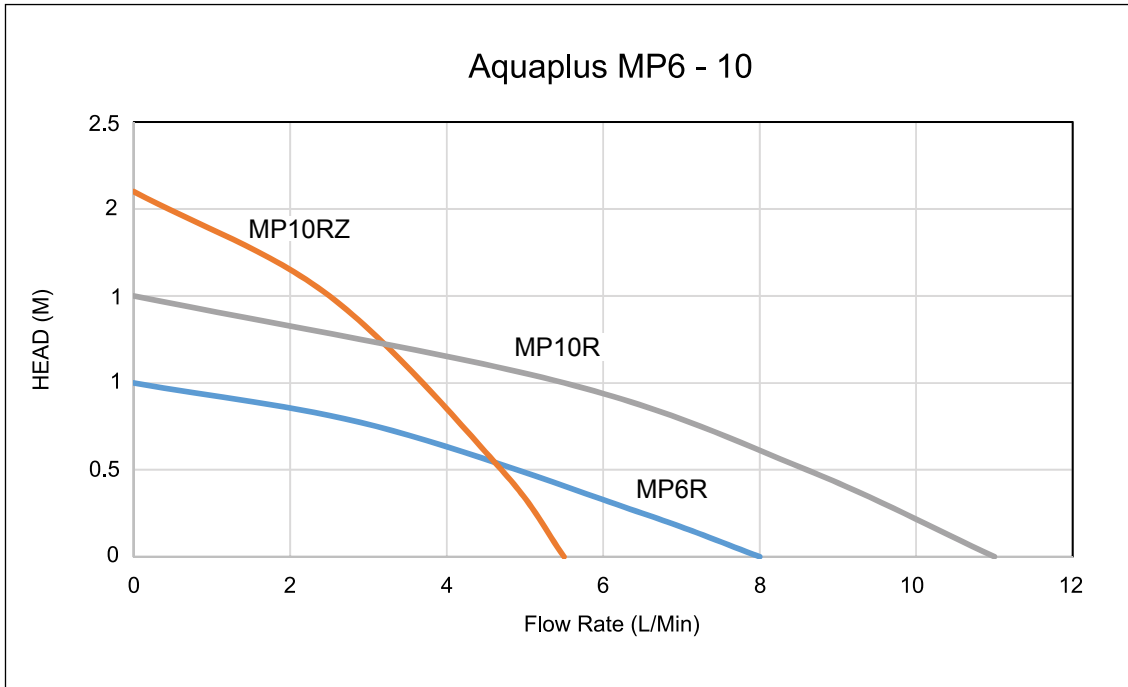
MD Series - MP Range (cont.)

Specifications

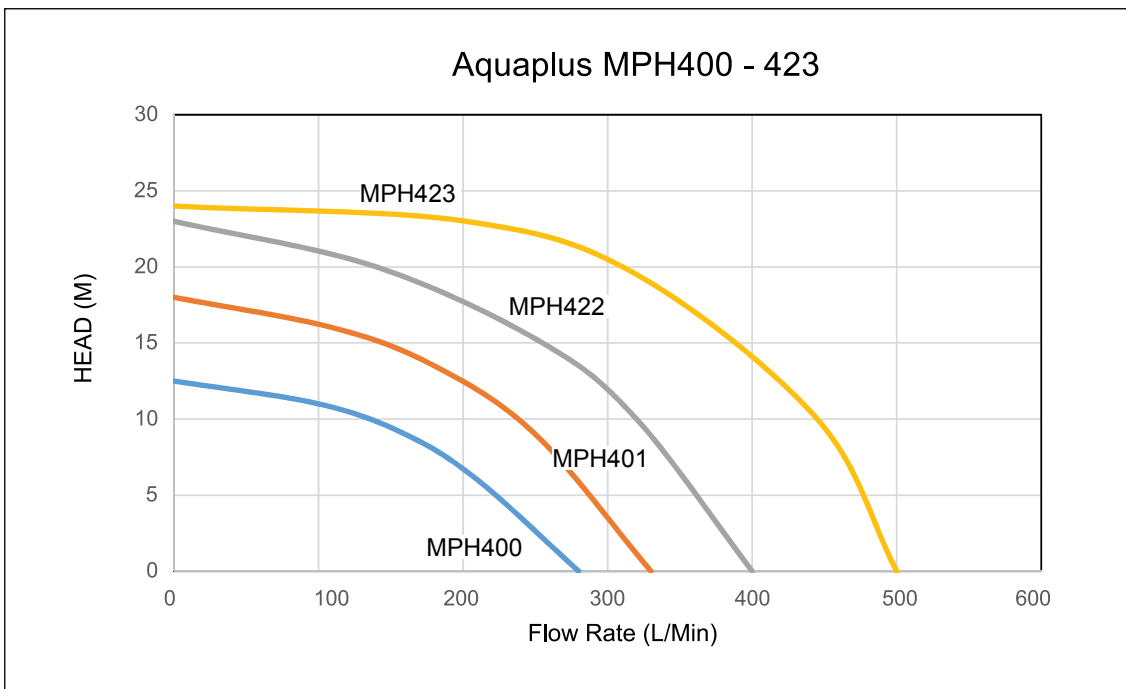
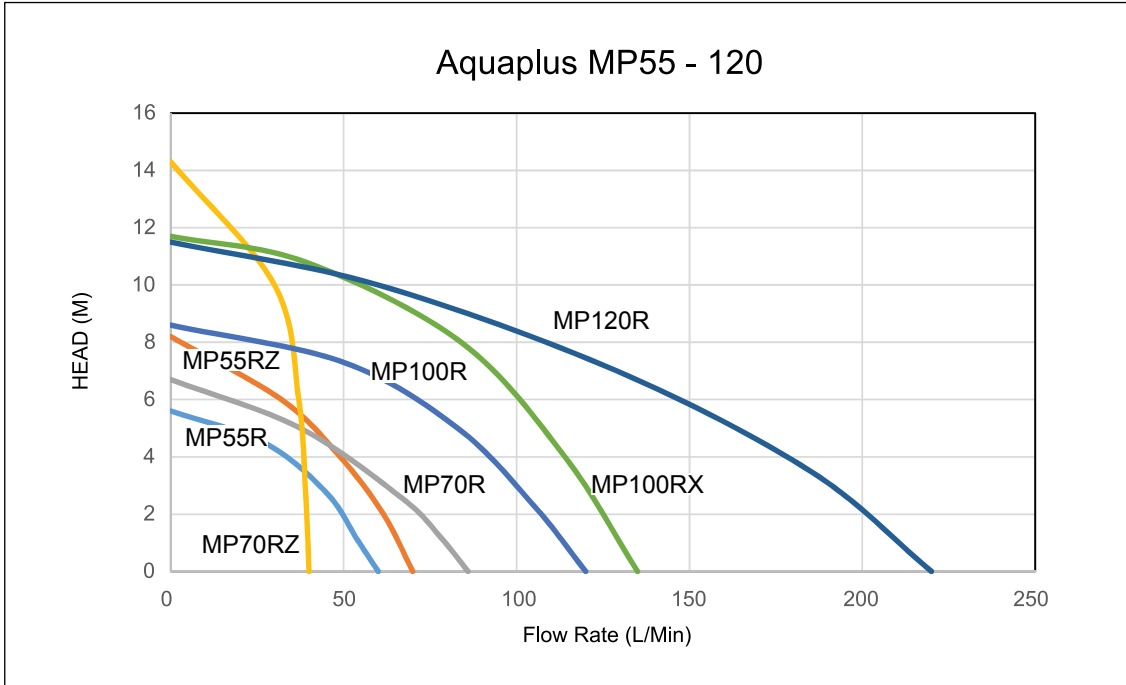
Model Number	Material Type*	Hose Connection Ports (mm)		Threaded Connection Ports (BSP-m)	Max. Capacity (L/Min) 50Hz/60Hz	Max. Head (M) 50Hz/60Hz	Specific Gravity Max. (kg/m ³)	Output (Watt)	Phase	Weight (kg)
MAGMP6R	PP+GF/FPM	14	14	-	8/9	1/1.4	<1.2	6	1	0.9
MAGMP6RZ	PP+GF/FPM	14	14	-	5.5/6	2.1/2.7	<1.1	6	1	0.9
MAGMP10R	PP+GF/FPM	14	14	-	11/12	1.5/2.1	<1.1	6	1	0.9
MAGMP15R	PP+GF/FPM	16	16	-	16/19	2.7/3.4	<1.1	10	1	1.6
MAGMP15RM	PP+GF/FPM	-	-	3/4	16/19	2.7/3.4	<1.3	10	1	1.6
MAGMP20R	PP+GF/FPM	18	18	-	27/32	3.4/4.3	<1.3	15	1	2.0
MAGMP20RM	PP+GF/FPM	-	-	3/4	27/32	3.4/4.3	<1.3	15	1	2.0
MAGMP20RX	PP+GF/FPM	26	26	-	46/52	1.8/2.5	<1.3	15	1	2.0
MAGMP20RXM	PP+GF/FPM	-	-	1	46/52	1.8/2.5	<1.3	15	1	2.0
MAGMP20RZ	PP+GF/FPM	18	18	-	10/11	4.6/6.9	<1.3	15	1	2.0
MAGMP20RZM	PP+GF/FPM	-	-	3/4	10/11	4.6/6.9	<1.3	15	1	2.0
MAGMP30R	PP+GF/FPM	20	20	-	33/38	3.8/5.4	<1.1	25	1	3.5
MAGMP30RM	PP+GF/FPM	-	-	3/4	33/38	3.8/5.4	<1.1	25	1	3.5
MAGMP30RX	PP+GF/FPM	26	26	-	62/72	2.9/4.1	<1.3	25	1	3.5
MAGMP30RXM	PP+GF/FPM	-	-	1	62/72	2.9/4.1	<1.3	25	1	3.5
MAGMP30RZ	PP+GF/FPM	18	18	-	15/17	8/11	<1.1	25	1	3.5
MAGMP30RZM	PP+GF/FPM	-	-	3/4	15/17	8/11	<1.1	25	1	3.5
MAGMP40R	PP+GF/FPM	20	20	-	45/52	4.6/6.5	<1.1	65	1	3.9
MAGMP40RM	PP+GF/FPM	-	-	3/4	45/52	4.6/6.5	<1.1	65	1	3.9
MAGMP40RZ	PP+GF/FPM	20	20	-	22/22	10/13.5	<1.1	65	1	3.9
MAGMP40RZM	PP+GF/FPM	-	-	3/4	22/22	10/13.5	<1.1	65	1	3.9
MAGMP40RX	PP+GF/FPM	26	26	-	75/85	3.3/4.7	<1.1	65	1	3.9
MAGMP40RXM	PP+GF/FPM	-	-	1	75/85	3.3/4.7	<1.1	65	1	3.9
MAGMP55R	PP+GF/FPM	26	26	-	60/70	5.6/8.2	<1.2	90	1 or 3	5.4
MAGMP55RM	PP+GF/FPM	-	-	1	60/70	5.6/8.2	<1.2	90	1 or 3	5.4
MAGMP55RZ	PP+GF/FPM	26	26	-	25/28	10/14	<1.1	90	1 or 3	5.4
MAGMP55RZM	PP+GF/FPM	-	-	1	25/28	10/14	<1.1	90	1 or 3	5.4
MAGMP70R	PP+GF/FPM	26	26	-	86/97	6.7/9.7	<1.1	150	1 or 3	6.0
MAGMP70RM	PP+GF/FPM	-	-	1	86/97	6.7/9.7	<1.1	150	1 or 3	6.0
MAGMP70RZ	PP+GF/FPM	20	20	-	40/43	14.3/20.3	<1.1	150	1 or 3	6
MAGMP70RZM	PP+GF/FPM	-	-	3/4	40/43	14.3/20.3	<1.1	150	1 or 3	6
MAGMP100R	PP+GF/FPM	26	26	-	120/130	8.6/11.6	<1.3	370	1 or 3	8.5
MAGMP100RM	PP+GF/FPM	-	-	1	120/130	8.6/11.6	<1.3	370	1 or 3	8.5
MAGMP100RX	PP+GF/FPM	26	26	-	170	9	<1.3	370	1 or 3	8.5
MAGMP120R	PP+GF/FPM	28	28	-	220	10.5	<1.3	550	1 or 3	11.0
MAGMP120RM	PP+GF/FPM	-	-	2 1/2	220	10.5	<1.3	550	1 or 3	11.0
MAGMPH400CV5E	PP+GF/FPM	-	-	1 1/2	220	12.5	<1.3	400	3	14.0
MAGMPH401CV5E	PP+GF/FPM	-	-	1 1/2	260	18	<1.3	750	3	17.0
MAGMPH422CV5E	PP+GF/FPM	-	-	2	320	21	<1.3	1500	3	24.0
MAGMPH423CV5E	PP+GF/FPM	-	-	2	380	22	<1.3	2200	3	26

Notes: *PP = Polypropylene, GF = Glass Fibre, FPM = Viton®

Performance Curves



Performance Curves

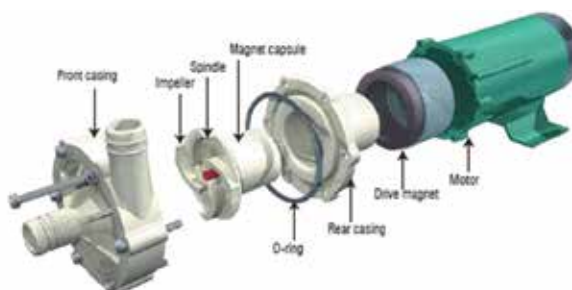


MD Series - MP Range (cont.)

Sample Part Number Description

MAG	MP	30	R	M	1P
↓	↓	↓	↓	↓	↓
Pump Range	Pump Series MP	Pump Sizes 6 10 15 20 30 40 55 70 100 120	Pump Design R: Standard RZ: High head RX: High flow	Pump Port Option Omitted: Hose tail M: Threaded ports BSP - m	Motor Type 1P: Single phase 3P: Three phase

MAGMP30RM1P - Aquaplus Magnetic Drive Pump
 Pump size – 30
 Pump design – standard
 Port type – threaded
 Motor type – 220 – 240 volt single phase IP44



Material Types

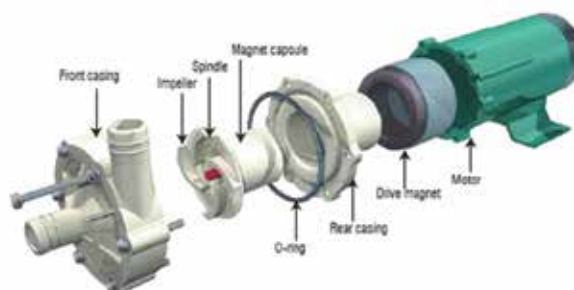
Part Name	Material type	Optional materials
Casing	Glass fibre reinforced polypropylene	PVDF
Impeller	Glass fibre reinforced polypropylene	PVDF
Spindle	Aluminium oxide ceramic	
Bearing	High density carbon	
Thrust ring	Aluminium oxide ceramic	
O-ring	FKM (Viton®)	EPDM

Sample Part Number Description

MAG	MPH	40	Ø	CV	5	E	3P
Pump Range	Pump Series MPH	Pump Sizes 40 42	Motor Size 0 – 0.4kW 1 – 0.75kW 2 – 1.5kW 3 – 2.2kW 5 – 3.7kW	Pump Bushing Option CV: Carbon/ ceramic/FKM RV: PTFE/ceramic/ FKM FE: Carbon/ ceramic/EPDM	Motor Hz 5 – 50Hz 6 – 60Hz	Contact System D: Dry run capable E: Dry run not possible	Motor Type 3P: Three phase

MAGMPH400CV5E3P - Aquaplus Magnetic Drive Pump

Pump size – 40
 Motor size – 0.4kW IP44
 Bushing option – Carbon/ceramic/FKM
 Motor Hz – 50
 Contact system – Dry run not possible
 Motor Type – 400 volt 3 phase



Material Types

Part Name	Material type	Optional materials
Casing	Glass fibre reinforced polypropylene	Glass fibre reinforced ETFE
Impeller	Glass fibre reinforced polypropylene	Glass fibre reinforced ETFE
Spindle	Aluminium oxide ceramic	
Bearing	High density carbon	PTFE, Aluminium oxide ceramic
Thrust ring	Aluminium oxide ceramic	
O-ring	FKM (Viton®)	EPDM, AFLAS
Mouth ring	PTFE	
Liner ring	Aluminium oxide ceramic	

Aquaplus Product Range

ESD Series – End Suction DIN (24255) Pumps

ESI Series – End Suction ISO (2585) Pumps

SP Series – Self Priming Pumps

SD Series – Submersible Dewatering Pumps

AD Series – Air Diaphragm Pumps

MD Series – Magnetic Drive Pumps

FRM Series – Flexible Rising Main (Borehole Pump Hose)

MS Series – Mechanical Seals (Single Spring & Cartridge)

We are also able to provide Progressive Cavity, Peristaltic Pumps and Split Case Pumps.

The logo for Aquaplus, featuring the word "aquaplus" in a stylized, blue, lowercase font with a wave-like underline.

AVAILABLE FROM

CONTACT US



For information on these products or for any specialised requirements please contact your local Aquaplus distributor or visit our website at www.aquapluspumps.com.au