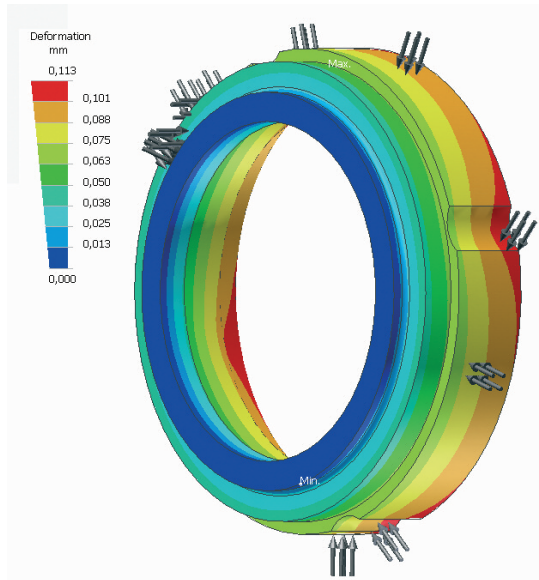
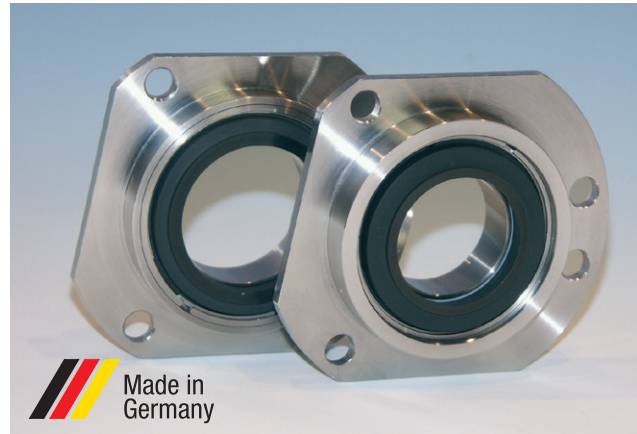


## Compact seal suitable for Sundyne Pumps



Deformation analysis of the stationary carbon ring at  $\Delta P$  20bar



The medium lubricated mechanical seal type KPS is specially designed for the application in Sundyne high speed centrifugal pumps.

Identical main dimensions with the original seals allow easy installation and interchangeability\*.

By applying the latest FE calculation methods the stationary carbon face is designed to provide superior sealing performance combined with high operating safety.

### Design features

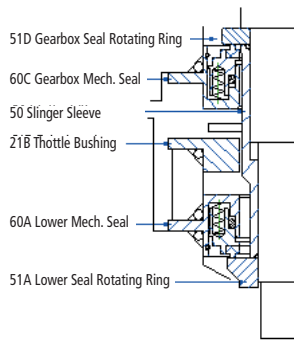
- Multi springs
- Bi-directional
- Secondary seal: PTFE U-cup or Elastomer

Two seal sizes are available:

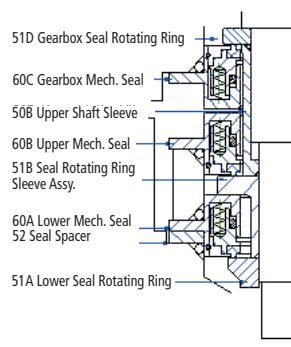
**Type KPS-317: Lower seal (Pos. 60A)**

**Type KPS-381: Upper seal (Pos. 60B)**

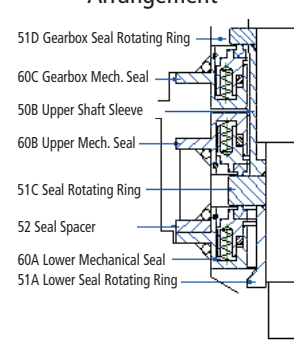
### Single Seal Arrangement



### Tandem Seal Arrangement



### Double Seal (Face to Face) Arrangement



### Operation limits

Temperature:	-50°C to +220°C
Pressure:	max. 45bar
Speed:	max. 22.000 rpm

### Standard materials

Seal face:	carbon resin impr.
Springs:	stainless steel
Seal retainer:	stainless steel
Secondary seal:	PTFE U-cup, Viton, EP-rubber etc.

**further materials on request**

\* Due to its design **sammler cs** seal repair kits consisting of the stationary seal ring, the springs, the back up ring and the secondary seal fit in the original Sundyne mechanical seal retainer