

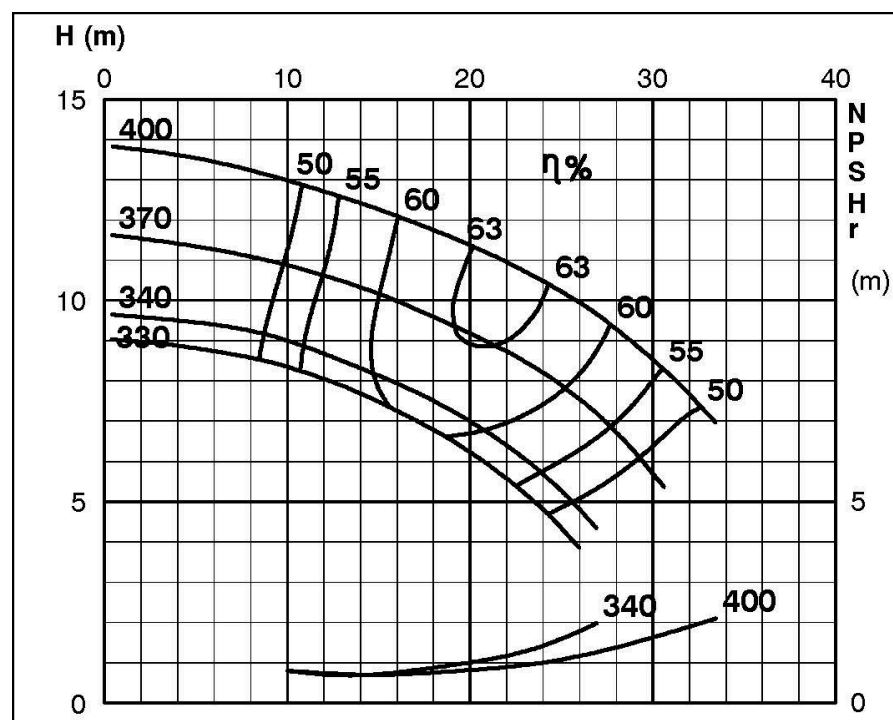
TECHNICAL SPECIFICATIONS

ISP Process Pumps - ISP100-400 (125-100-400)

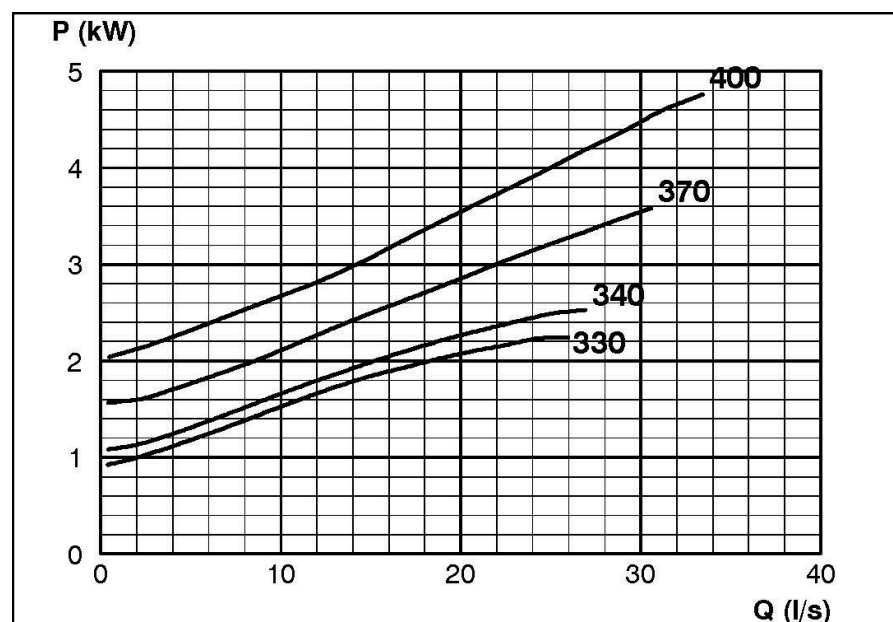
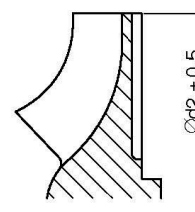
ISP Impeller 283882 OPEN B18 Z4

Performance Curve - ISP100-400-O-710

710 rpm



IMPELLER DIA
Ød ₂ (mm)
400
395
390
385
380
375
370
365
360
355
350
345
340
335
330



RET13919