

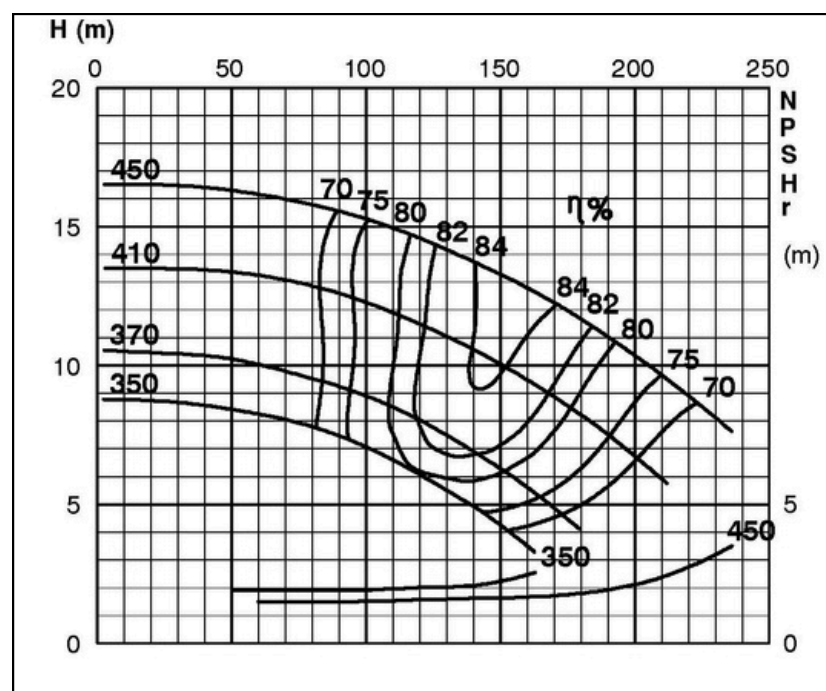
TECHNICAL SPECIFICATIONS

ISP Process Pumps - ISP250-400 (300-250-400)

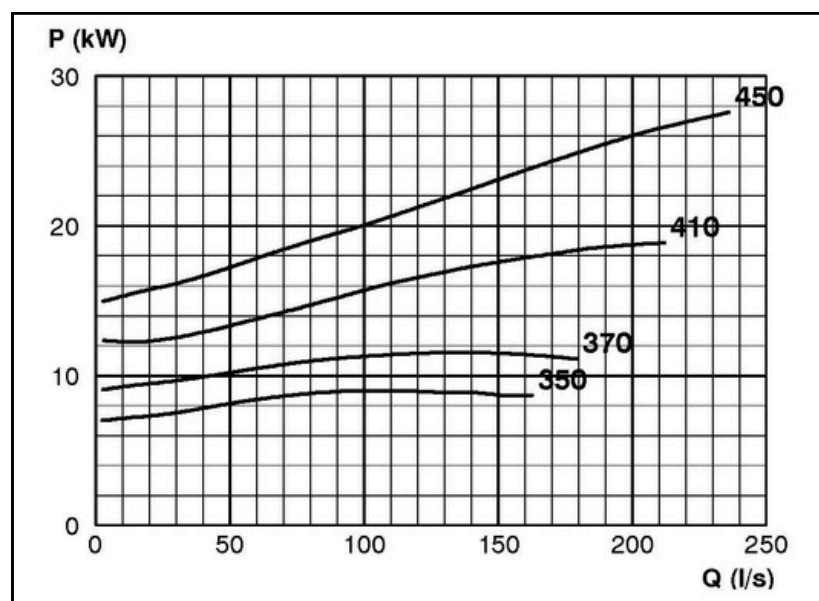
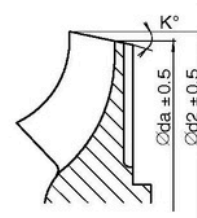
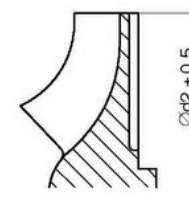
ISP Impeller 283892 OPEN B55 Z5

Performance Curve - ISP250-400-O-730

730 rpm



IMPELLER DIA		
ϕd_2 (mm)	K°	ϕda (mm)
450		
445		
440		
435		
430		
425		
420		
415		
410		
405		
400		
395		
390	2	385.9
385	2	380.9
380	3	373.8
375	4	366.5
370	5	359.3
365	6	352.1
360	7	344.8
355	8	337.3
350	9	329.7



RET13925