

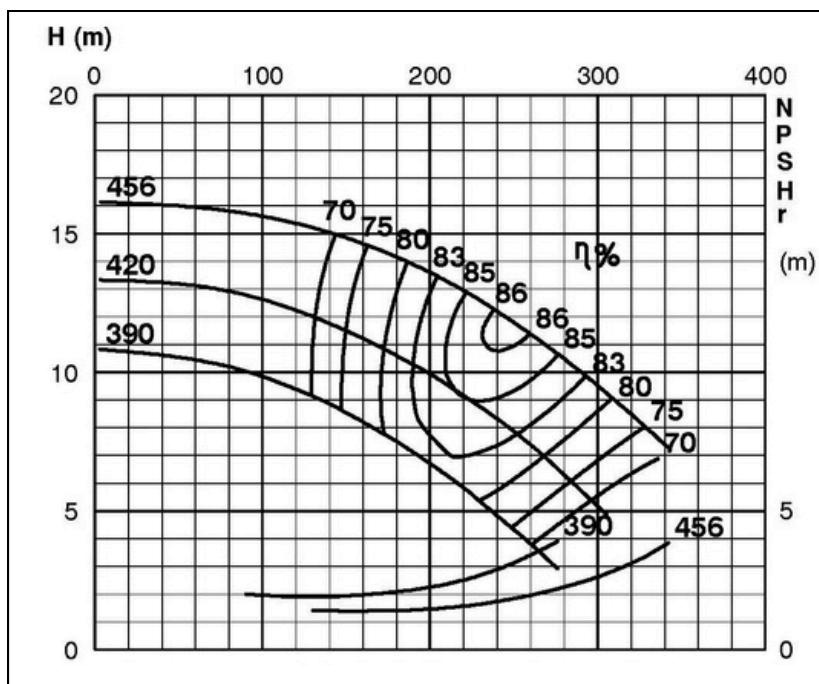
TECHNICAL SPECIFICATIONS

ISP Process Pumps - ISP300-400 (350-300-400)

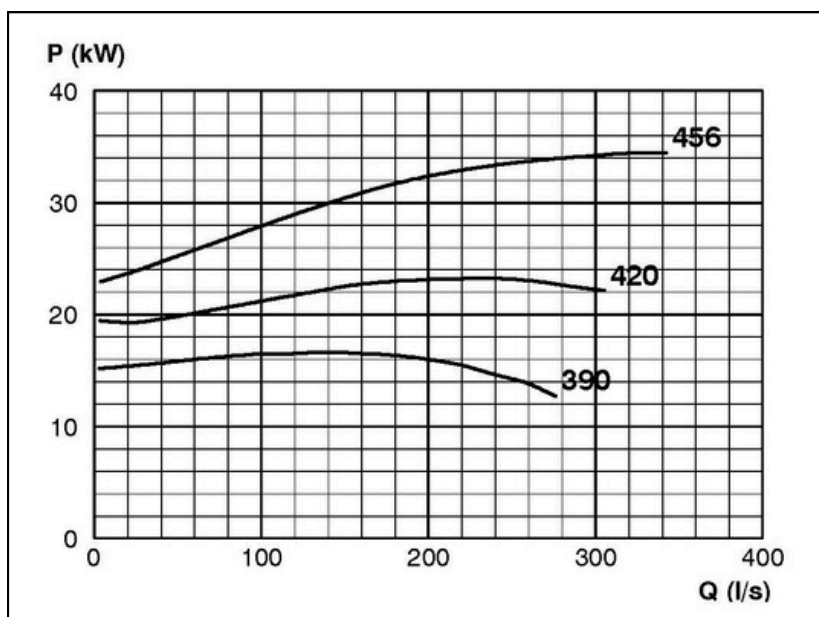
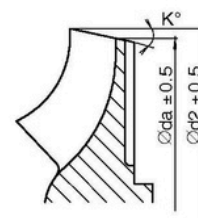
ISP Impeller 283893 OPEN B69 Z6

Performance Curve - ISP300-400-O-730

730 rpm



IMPELLER DIA		
∅d ₂ (mm)	K°	∅da (mm)
456	8	436.8
450	8	430.7
445	9	423.1
440	10	415.5
435	10	410.3
430	11	402.6
425	11	397.2
420	12	389.4
415	12	384.0
410	13	376.1
405	14	367.9
400	15	359.8
395	16	351.7
390	17	343.2



RET13926