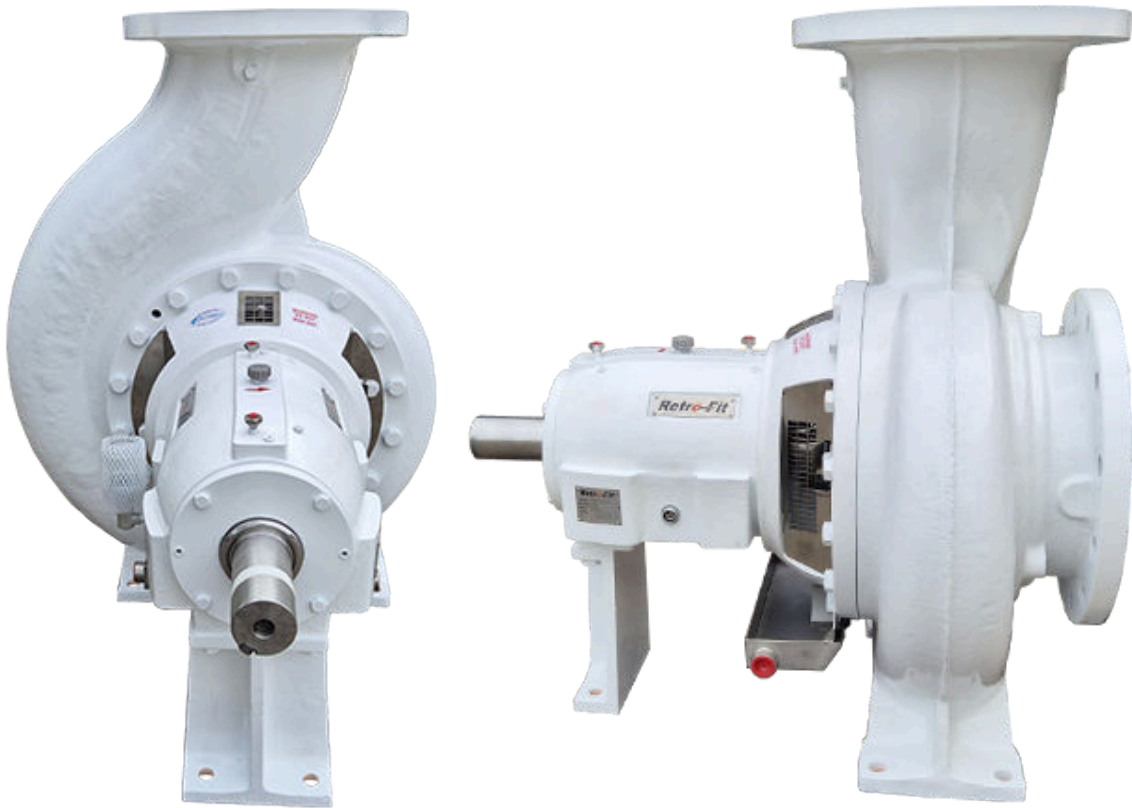


TECHNICAL DATA SHEETS

Air Separation Version (ISRP) 600 Pump Curve Booklet



TECHNICAL SPECIFICATIONS



ISP Process Pumps - ISP400-600 (500-400-600)

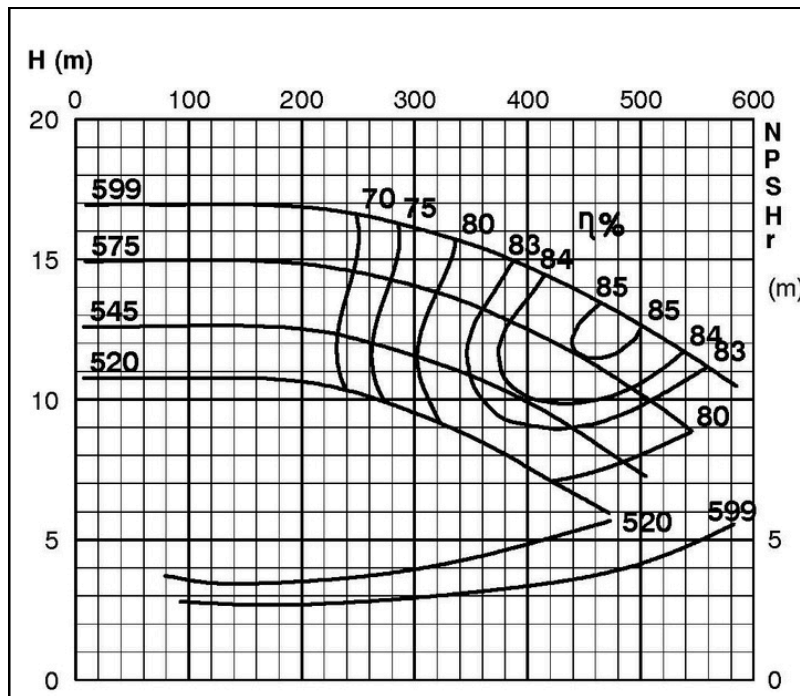
ISP Impeller 283900 OPEN B93 Z6

ISRP: Impeller 285281 OPEN B93 Z6, please add the power demand of the degassing unit = 0.7 kW

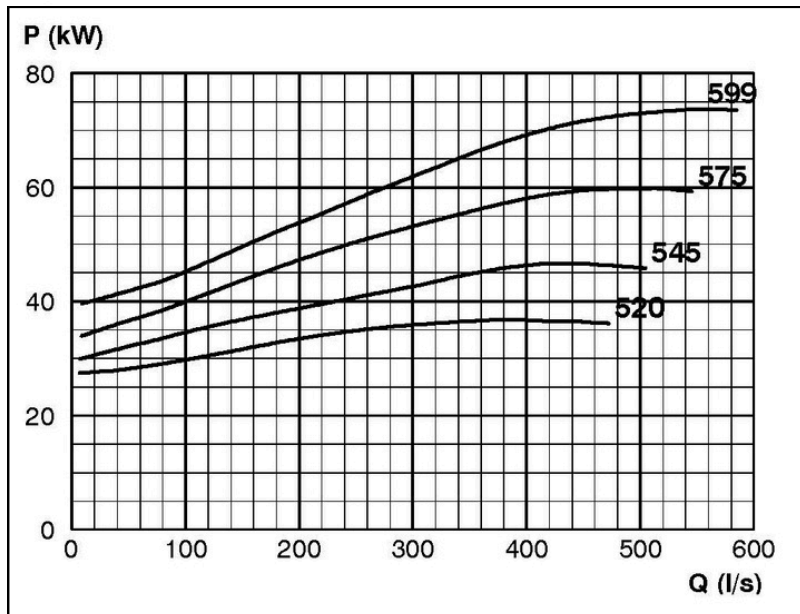
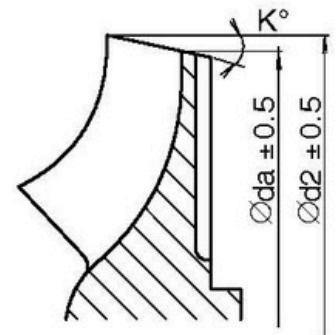
ISSP: Impeller 285281 OPEN B93 Z6, please add the power demand of the degassing unit = 1.8 kW

Performance Curve - ISP400-600-O-590

590 rpm



IMPELLER DIA		
∅d ₂ (mm)	K°	∅d _a (mm)
599	7	576.4
595	7	572.2
590	8	563.8
585	8	558.7
580	9	550.3
575	9	545.1
570	10	536.7
565	10	531.3
560	11	522.8
555	11	517.4
550	13	505.2
545	13	500.0
540	14	491.1
535	14	485.6
530	15	476.7
525	16	467.7
520	17	458.6



RET13947

TECNICAL SPECIFICATIONS



ISP Process Pumps - ISP500-600 (500-500-600)

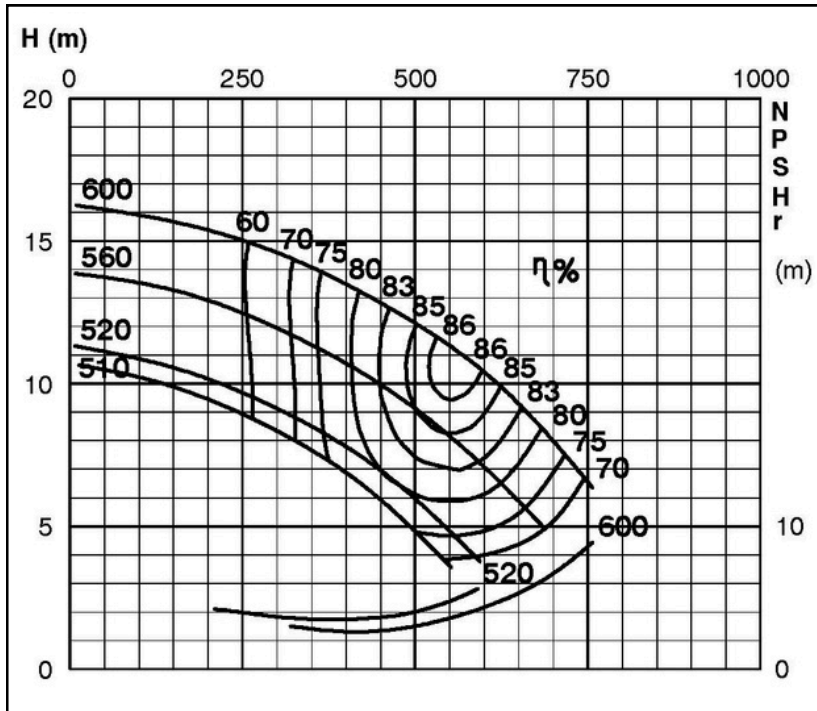
ISP Impeller 283901 OPEN B114 Z6

ISRP: Impeller 285282 OPEN B114 Z6, please add the power demand of the degassing unit = 0.7 kW

ISPP: Impeller 285282 OPEN B114 Z6, please add the power demand of the degassing unit = 1.8 kW

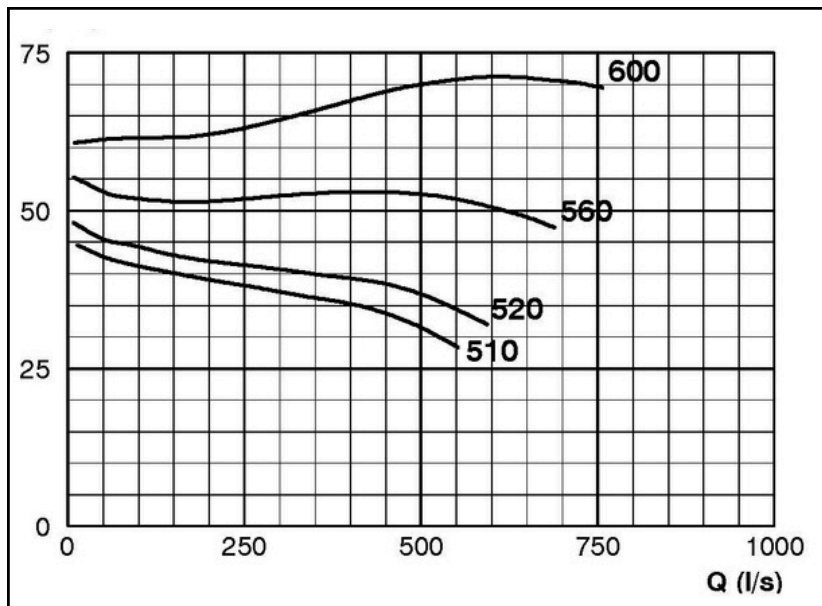
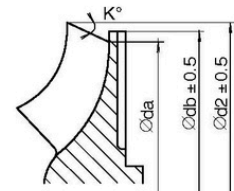
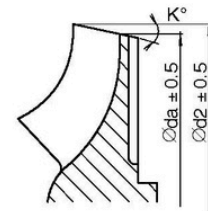
Performance Curve - ISP500-600-O-590

590 rpm



IMPELLER DIA			
∅d ₂ (mm)	K°	∅d _a (mm)	∅d _b (mm)
600	15	541.2	
595	15	535.7	
590	15	530.2	
585	15	524.7	
580	15	519.2	
575	16	509.7	
570	16	503.8	
565	16	498.3	
560	17	488.7	
555	17	482.5	
550	18	472.7	
545	18	466.8	
540	19	456.7	
535	19	450.7	
530	20	440.4	
525	20	434.0	
520	21	423.0	430 ^{e)}
515	22	413.0	430 ^{e)}
510	23	400.0	430 ^{e)}

^{e)} Only for ARP/ASP



RET13949

TECHNICAL SPECIFICATIONS



ISP Process Pumps - ISP200-600 (300-200-600)

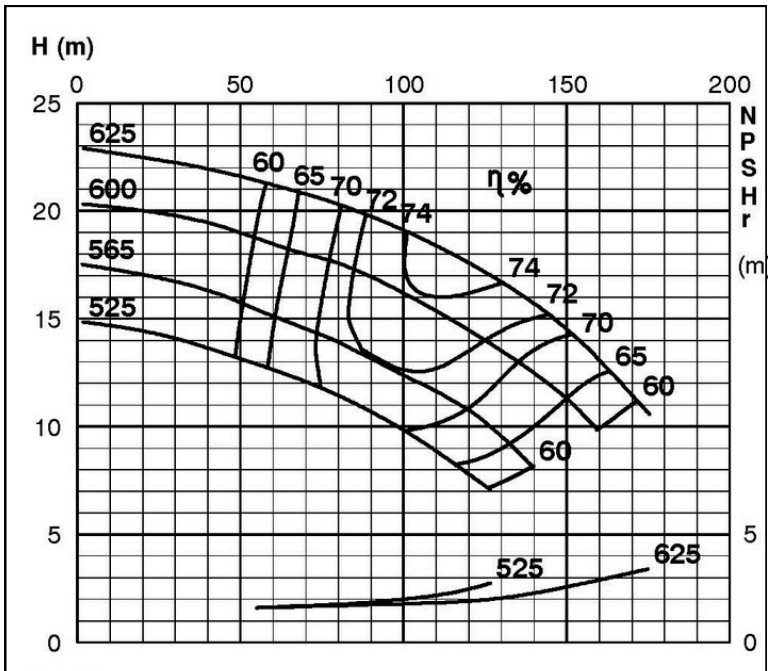
ISP Impeller 283938 OPEN B46 Z6

ISRP: Impeller 285452 OPEN B46 Z6, please add the power demand of the degassing unit = 0.7 kW

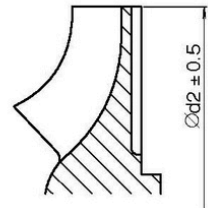
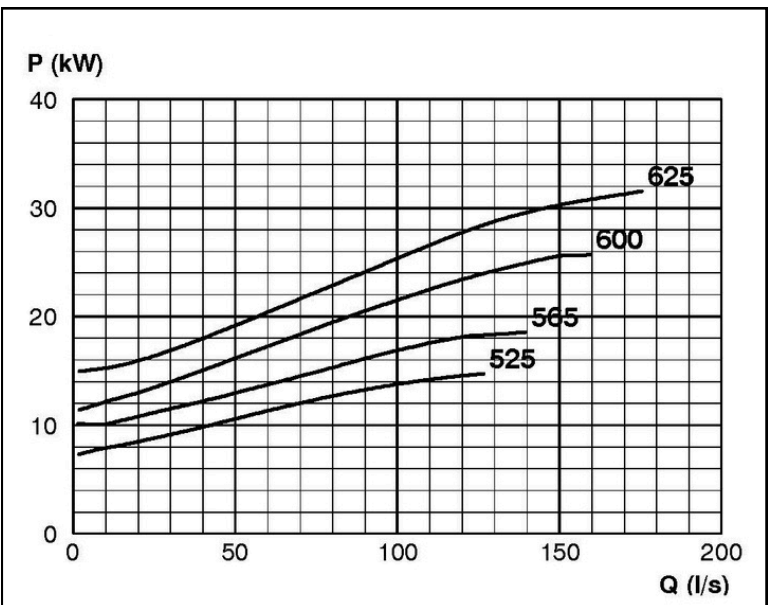
ISSP: Impeller 285452 OPEN B46 Z6, please add the power demand of the degassing unit = 1.8 kW

Performance Curve - ISP200-600-O-590

590 rpm



IMPELLER DIA
Ød ₂ (mm)
625
620
615
610
605
600
595
590
585
580
575
570
565
560
555
550
545
540
535
530
525



RET13951

TECHNICAL SPECIFICATIONS



ISP Process Pumps - ISP250-600 (300-250-600)

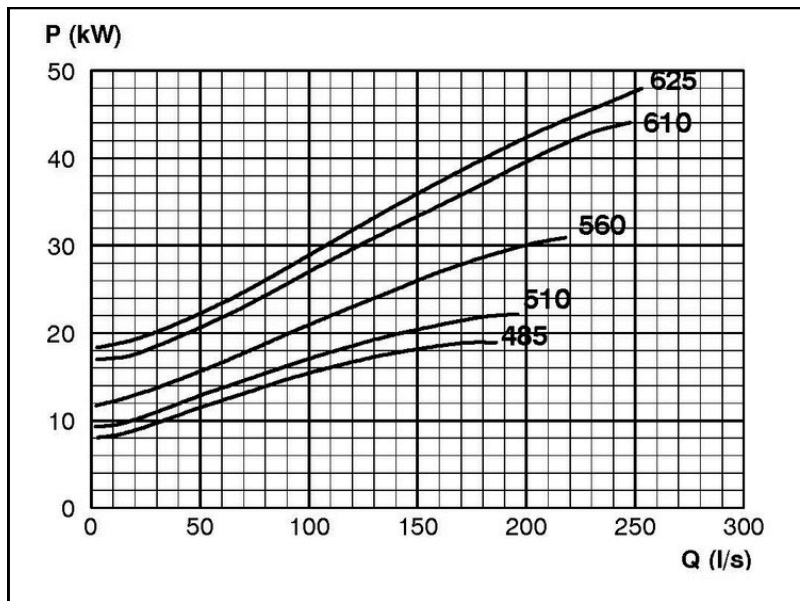
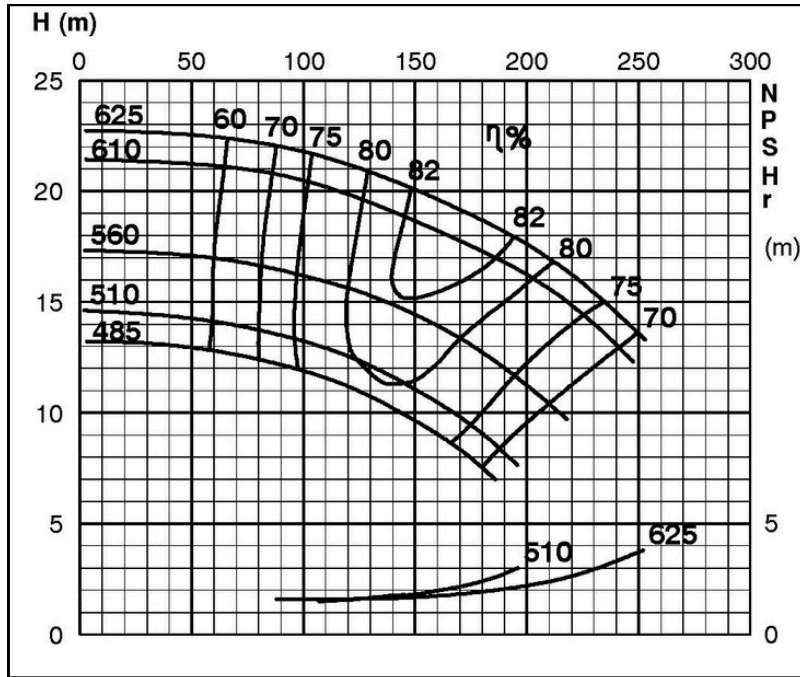
ISP Impeller 283939 OPEN B43 Z5

ISRP: Impeller 285453 OPEN B43 Z5, please add the power demand of the degassing unit = 0.7 kW

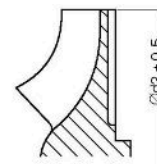
ISSP: Impeller 285453 OPEN B43 Z5, please add the power demand of the degassing unit = 1.8 kW

Performance Curve -ISP250-600-O-590

590 rpm



IMPELLER DIA
∅d ₂ (mm)
625
620
615
610
605
600
595
590
585
580
575
570
565
560
555
550
545
540
535
530
525
520
515
510
505
500
495
490
485



RET13952

TECHNICAL SPECIFICATIONS

Retroc-Fit ISP Process Pumps - ISP300-600 (400-300-600)

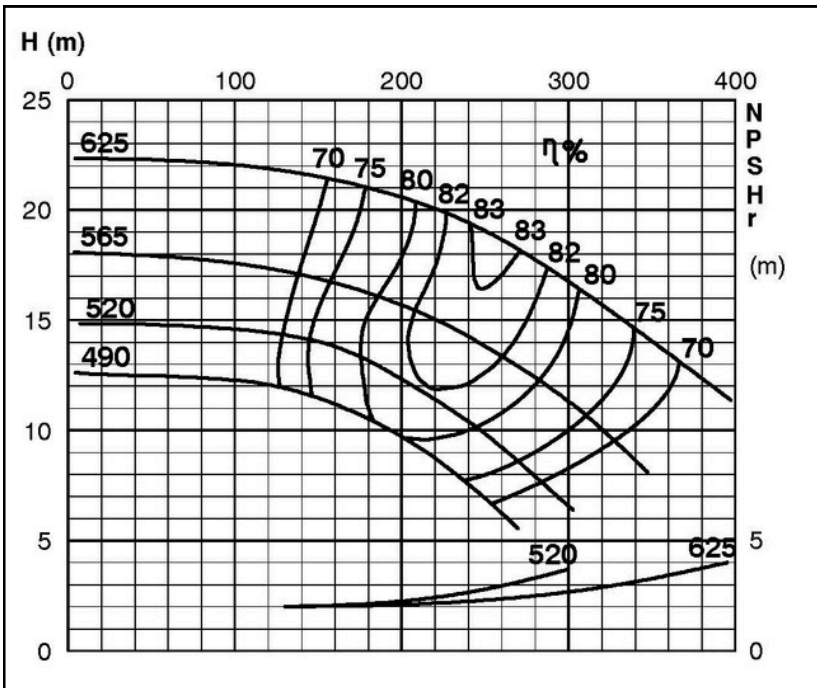
ISP Impeller 283940 OPEN B67 Z5

ISRP: Impeller 285454 OPEN B67 Z5, please add the power demand of the degassing unit = 0.7 kW

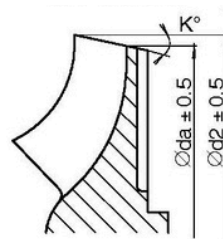
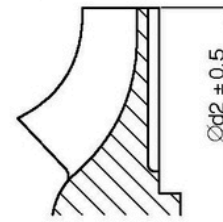
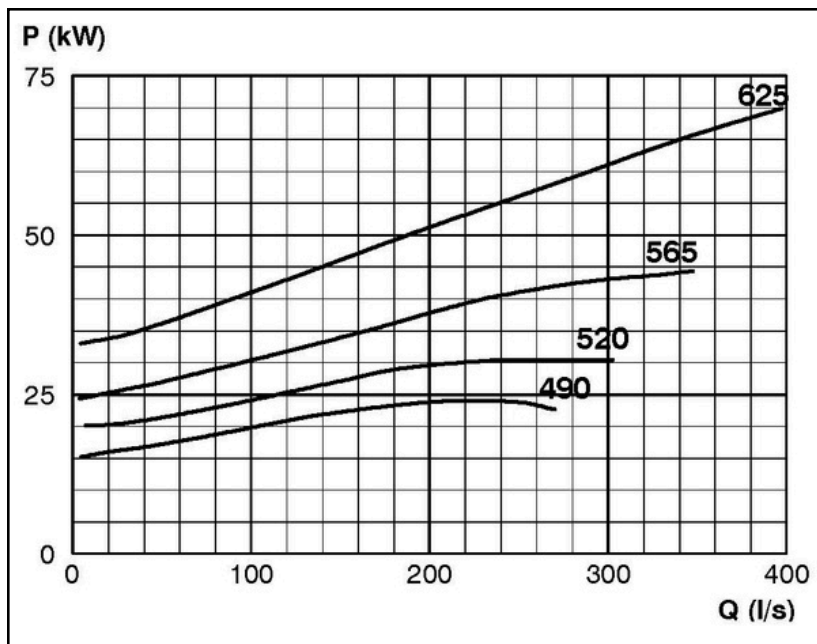
ISSP: Impeller 285454 OPEN B67 Z5, please add the power demand of the degassing unit = 1.8 kW

Performance Curve - ISP300-600-O-590

590 rpm



IMPELLER DIA		
$\odot d_2$ (mm)	K°	$\odot d_a$ (mm)
625		
620		
615		
610		
605		
600		
595		
590		
585		
580		
575		
570		
565		
560		
555		
550		
545		
540		
535		
530		
525	1	522
520	2	515
515	3	507
510	4	501
505	4.5	493
500	5	486
495	5.5	479
490	6	473



RET13953

TECHNICAL SPECIFICATIONS

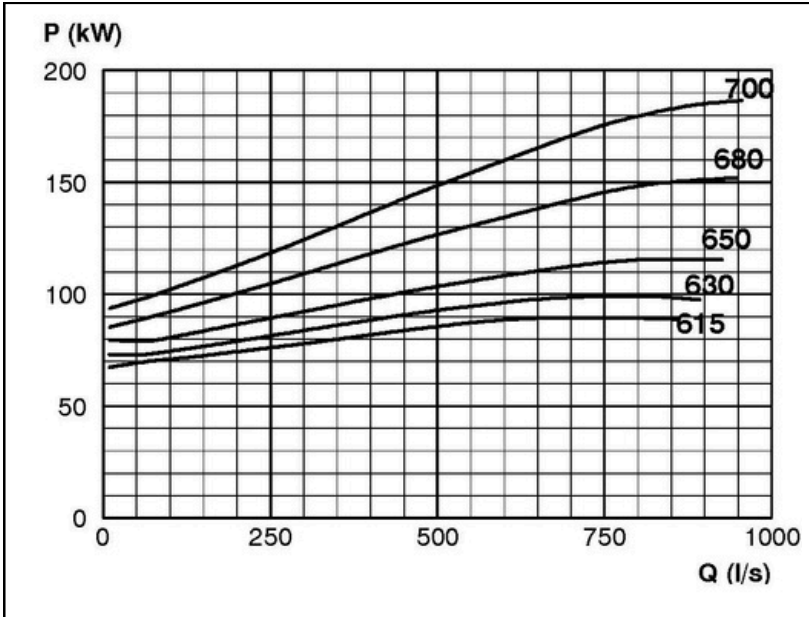
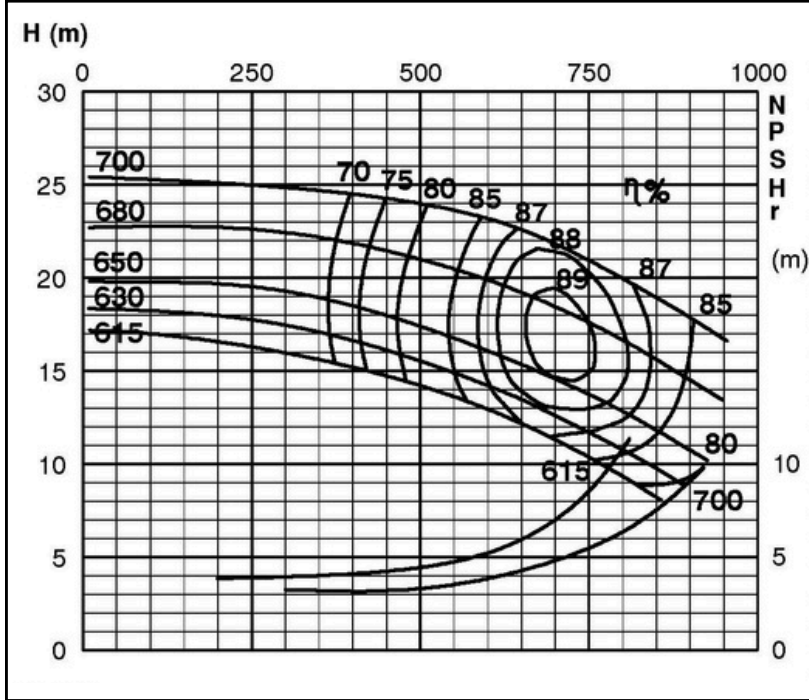


ISP Process Pumps - ISP500-700 (500-500-700)

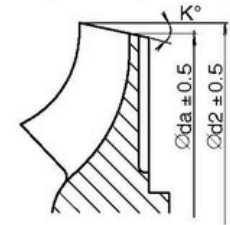
ISP 287984 OPEN B108 Z6

ISRP: Impeller 289019 OPEN B108 Z6, Please add the power demand of the degassing unit = 1.5 kW

590 rpm



IMPELLER DIA		
$\varnothing d_2$ (mm)	K°	$\varnothing d_a$ (mm)
700	7	673.6
695	7	668.8
690	8	659.6
685	8	654.4
680	9	645.4
675	9	640.2
670	10	631.0
665	10	625.8
660	11	616.6
655	11	611.2
650	12	602.0
645	12	596.6
640	13	587.4
635	13	581.8
630	14	572.4
625	14	567.0
620	15	557.4
615	16	547.8
610	16	542.2
605	17	532.4
600	18	522.6
595	19	512.6
590	20	502.6
585	21	492.4
580	22	482.2
575	23	472.0
570	24	461.4
565	25	450.8
560	26	440.0
555	27	429.0
550	28	418.0



RET13954

TECHNICAL SPECIFICATIONS



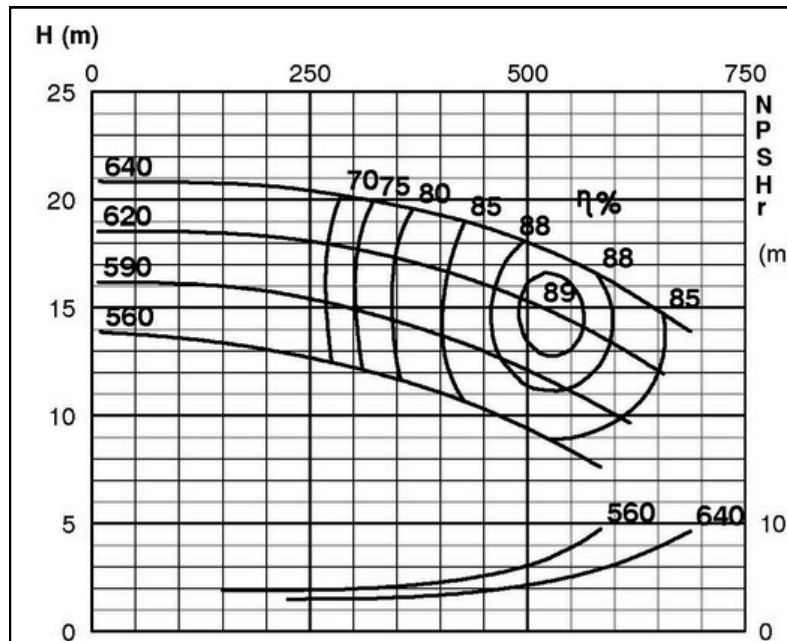
ISP Process Pumps - ISP500-700 (500-500-700)

ISP Impeller 289003 OPEN B98 Z6

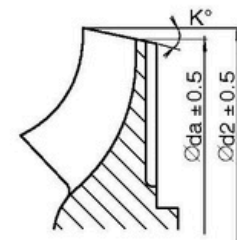
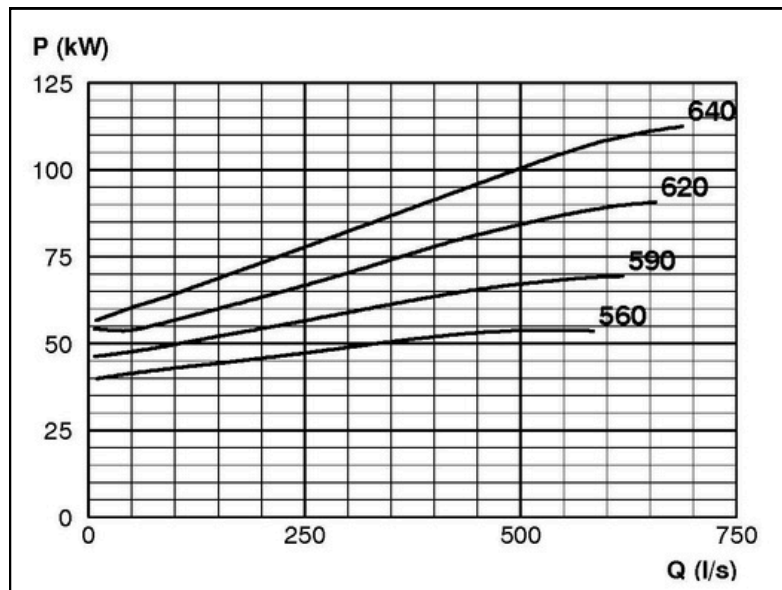
ISRP: Impeller 289211 OPEN B98 Z6, Please add the power demand of the degassing unit = 1.5 kW

Performance Curve - ISP500-700-O-590

590 rpm



IMPELLER DIA		
$\varnothing d_2$ (mm)	K°	$\varnothing d_a$ (mm)
640	7	616.1
635	7	611.0
630	8	604.4
625	8	597.2
620	9	588.5
615	10	579.8
610	10	574.6
605	11	565.8
600	11	560.3
595	12	551.6
590	13	542.7
585	13	537.3
580	14	528.3
575	14	522.8
570	15	513.7
565	16	504.5
560	16	498.9
555	17	489.6
550	17	483.9
545	18	474.4
540	19	464.8
535	20	455.1
530	21	445.4
525	22	435.5
520	23	425.4
515	24	415.2
510	25	404.9
505	26	394.3



RET13955

TECHNICAL SPECIFICATIONS



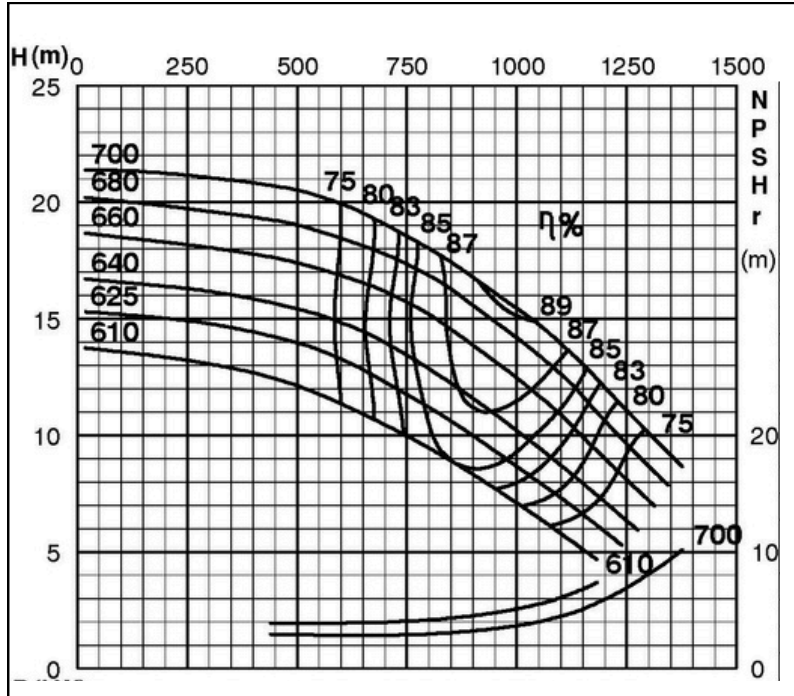
ISP Process Pumps - ISP600-700 (600-600-700)

ISP Impeller 286875 OPEN B133 Z6

ISRP: Impeller 287350 OPEN B133 Z6, Please add the power demand of the degassing unit = 1.5 kW

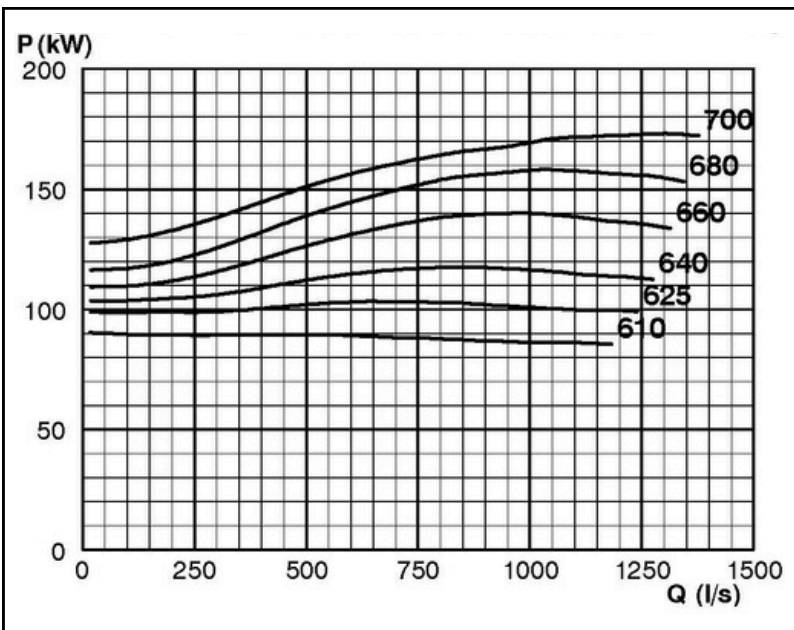
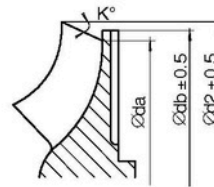
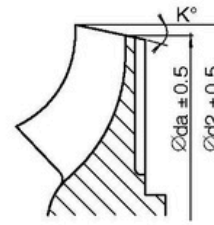
Performance Curve - ISP600-700-O-590

590 rpm



IMPELLER DIA				
∅d ₂ (mm)	K°	∅d _a (mm)		∅d _b (mm)
		APP	ARP	
700	15	632	632.4	
695	15	625	626.0	
690	15	620	619.6	
685	15	614	613.2	
680	15	608	606.7	
675	16	598	595.6	
670	16	592	588.7	
665	16	586	582.3	
660	17	576	571.1	
655	17	570	563.8	
650	18	560	499.8	
645	18	554	545.5	
640	19	544	533.7	
635	19	538	526.7	
630	20	526	514.7	
625	20	520	507.2	520 °
620	21	509	494.3	520 °
615	22	498	482.6	520 °
610	23	486	467.4	520 °

^{*)} Only for ARP



RET13956

TECHNICAL SPECIFICATIONS



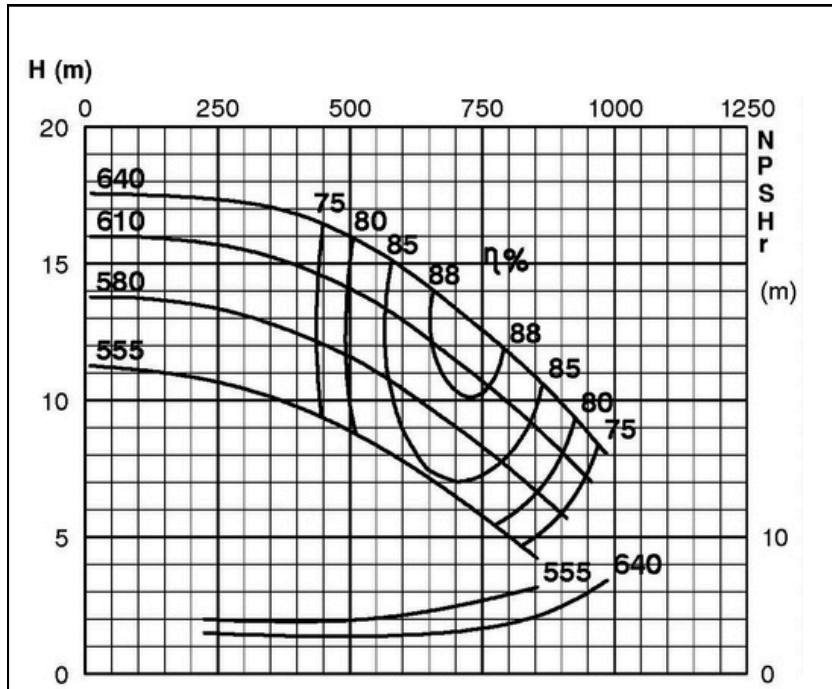
ISP Process Pumps - ISP600-700 (600-600-700)

ISP Impeller 289002 OPEN B121 Z6

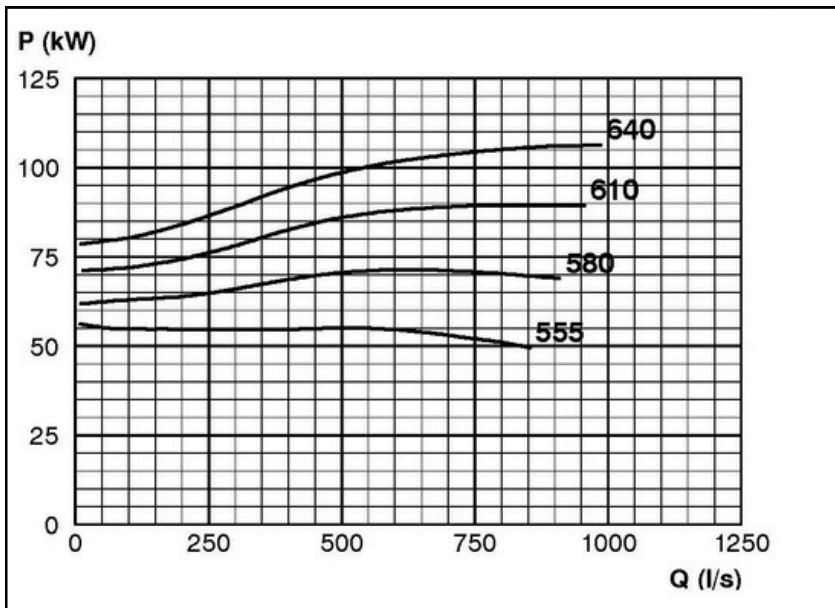
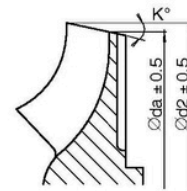
ARP: Impeller 289213 OPEN B121 Z6, Please add the power demand of the degassing unit = 1.5 kW

Performance Curve - ISP600-700-O-590

590 rpm



IMPELLER DIA		
∅d ₂ (mm)	K°	∅d _a (mm)
640	15	577.5
635	15	572.0
630	15	566.5
625	15	561.0
620	15	555.4
615	16	545.6
610	16	540.0
605	16	534.3
600	17	524.3
595	17	518.5
590	18	508.4
585	18	502.5
580	19	492.2
575	19	486.2
570	20	475.7
565	21	465.1
560	22	454.4
555	23	443.2



RET13957

TECHNICAL SPECIFICATIONS



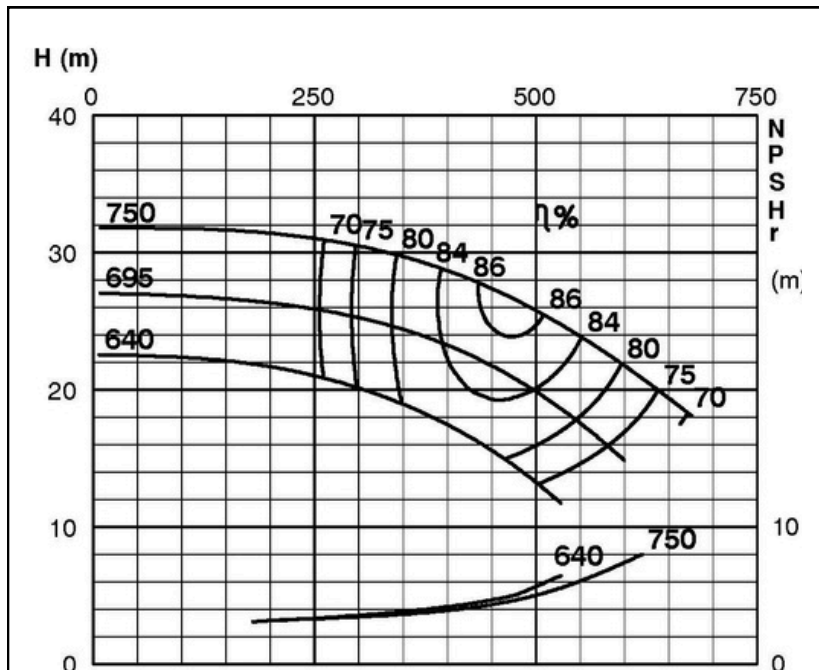
ISP Process Pumps - ISP400-750 (500-400-750)

ISP Impeller 289034 OPEN B84 Z6

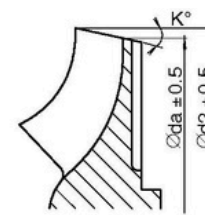
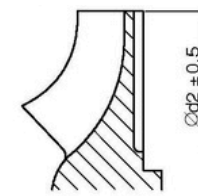
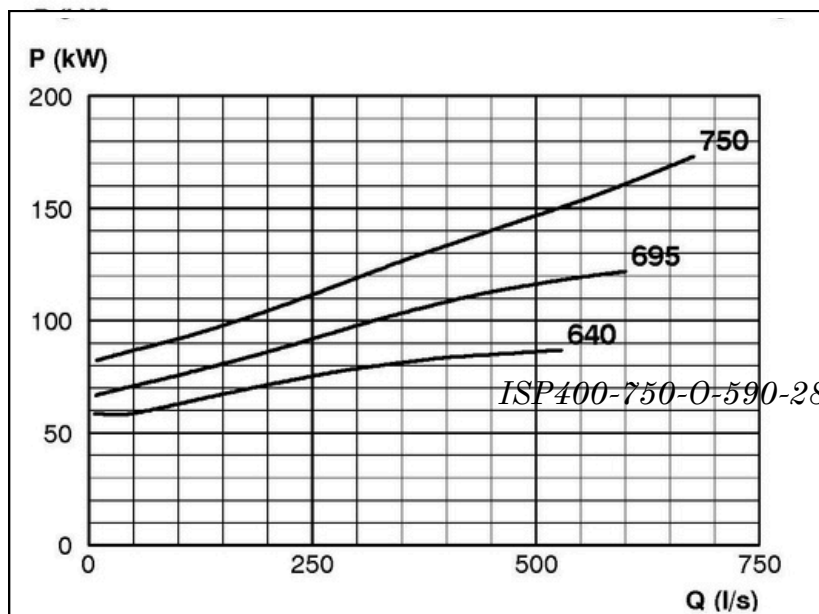
ISR: Impeller 289205 OPEN B84 Z6, please add the power demand of the degassing unit = 1.5 kW

Performance Curve - ISP400-750-O-590

590 rpm



IMPELLER DIA		
∅d ₂ (mm)	K°	∅d _a (mm)
750		
745		
740		
735		
730		
725		
720		
715		
710		
705		
700		
695		
690		
685		
680		
675		
670		
665		
660		
655		
650	1	646.8
645	1	641.7
640	2	633.4
635	2	628.4
630	3	620.0
625	3	614.9
620	4	606.5
615	5	597.9
610	5	592.8
605	6	584.2



RET13958

TECHNICAL SPECIFICATIONS



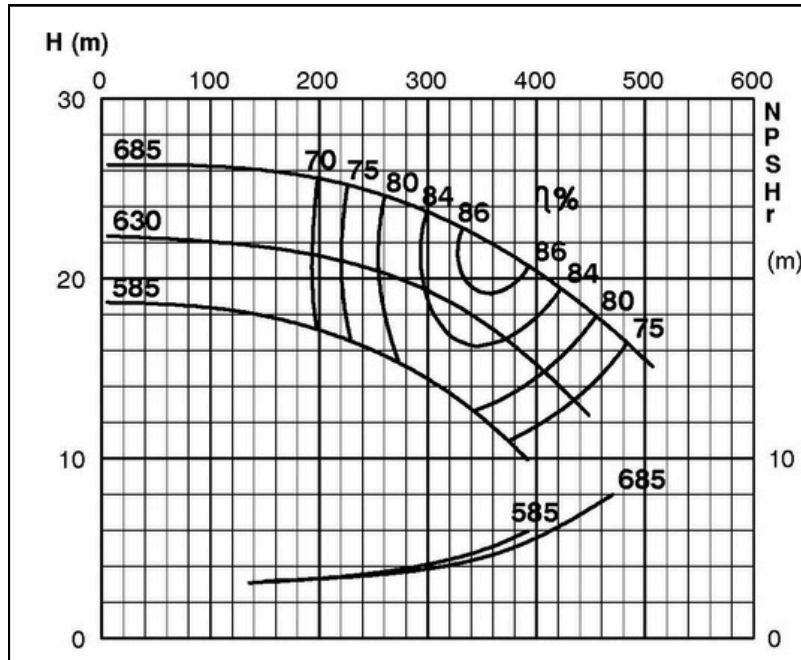
ISP Process Pumps - ISP400-750 (500-400-750)

ISP Impeller 289035 OPEN B76 Z6

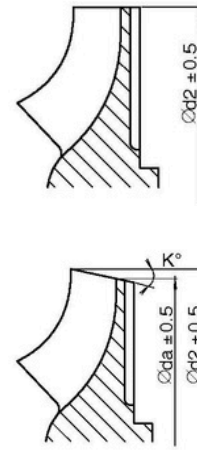
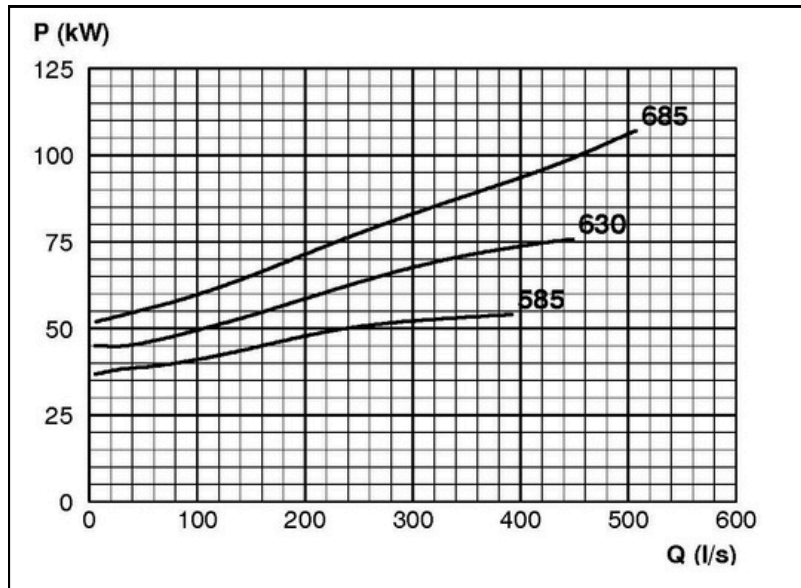
ARP: Impeller 289207 OPEN B76 Z6, Please add the power demand of the degassing unit = 1.5 kW

Performance Curve - ISP400-750-O-590

590 rpm



IMPELLER DIA		
∅d ₂ (mm)	K°	∅d _a (mm)
685		
680		
675		
670		
665		
660		
655		
650		
645		
640		
635		
630		
625		
620		
615		
610		
605		
600		
595	1	592.1
590	1	587.1
585	2	579.1
580	2	574.0
575	3	566.0
570	3	560.9
565	4	552.7
560	5	544.5
555	5	539.4
550	6	531.1



RET13959