

## TECHNICAL SPECIFICATIONS



### ISP Process Pumps - ISP100-600 (200-100-600)

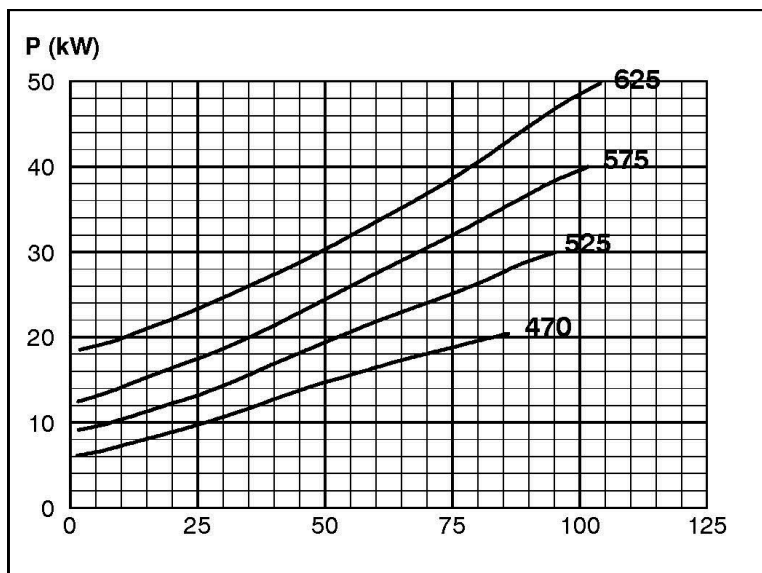
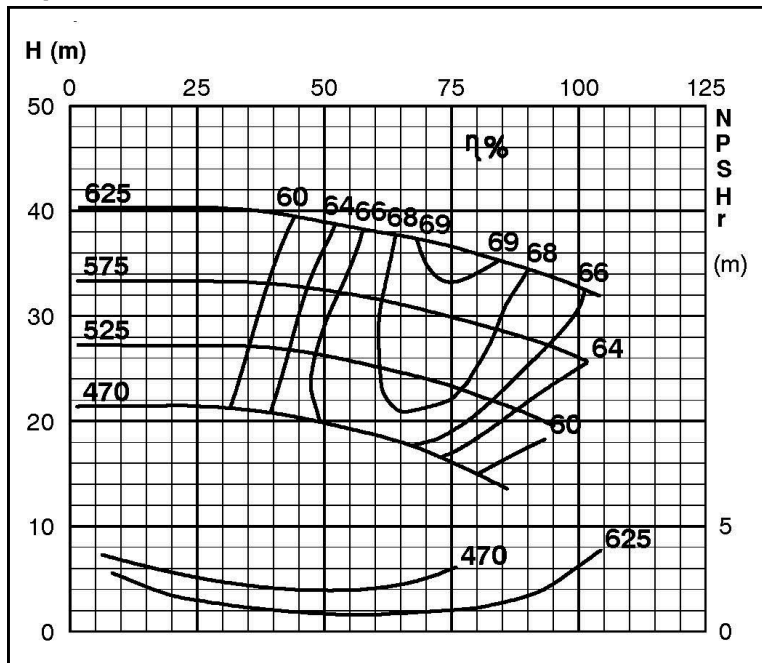
#### ISP Impeller 287904 OPEN B30 Z5

ARP: Impeller 288036 OPEN B30 Z5, please add the power demand of the degassing unit = 1.3 kW

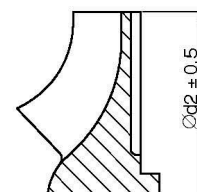
ASP: Impeller 288036 OPEN B30 Z5, please add the power demand of the degassing unit = 2.0 kW

#### Performance Curve - ISP100-600-O-740

740 rpm



IMPELLER DIA
Ød <sub>2</sub> (mm)
625
620
615
610
605
600
595
590
585
580
575
570
565
560
555
550
545
540
535
530
525
520
515
510
505
500
495
490
485
480
475
470



RET13936