

TECHNICAL SPECIFICATIONS



ISP Process Pumps - ISP200-500 (250-200-500)

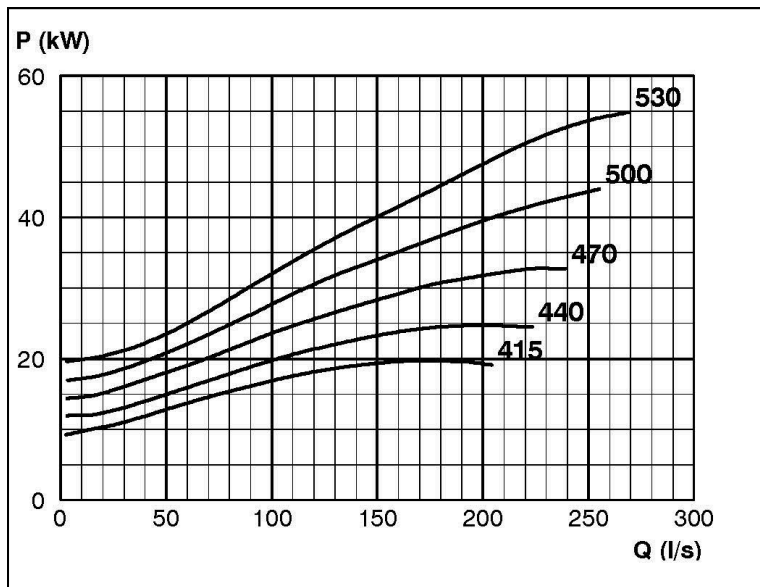
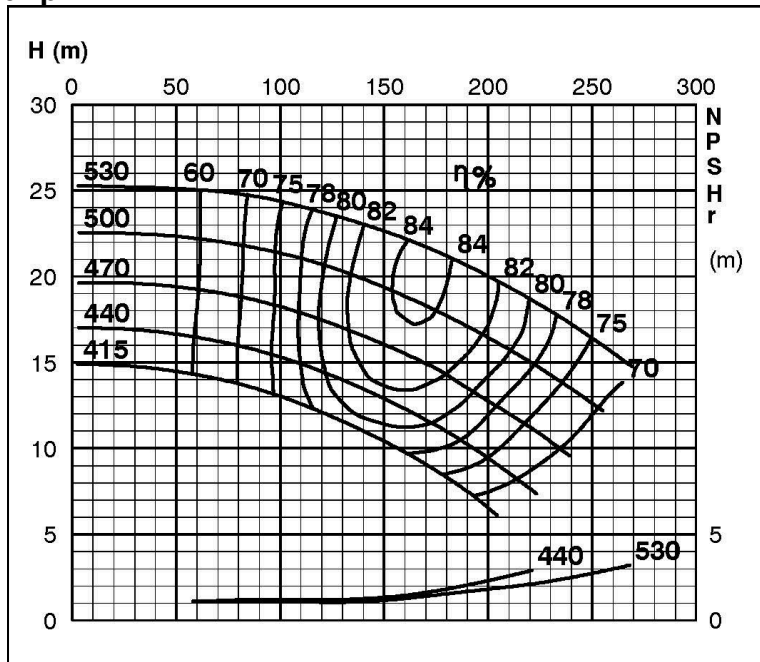
ISP Impeller 283897 OPEN B35 Z5

ISRP: Impeller 285278 OPEN B35 Z5, please add the power demand of the degassing unit = 0.7 kW

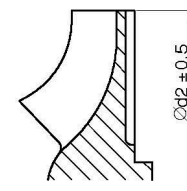
ISSP: Impeller 285278 OPEN B35 Z5, please add the power demand of the degassing unit = 2.0 kW

Performance Curve - ISP200-500-O-740

740 rpm



IMPELLER DIA
∅d ₂ (mm)
530
525
520
515
510
505
500
495
490
485
480
475
470
465
460
455
450
445
440
435
430
425
420
415



RET13931