

Retro-Fit

Pumps

TECHNICAL SPECIFICATIONS



ISP Process Pumps - ISP200-600 (300-200-600)

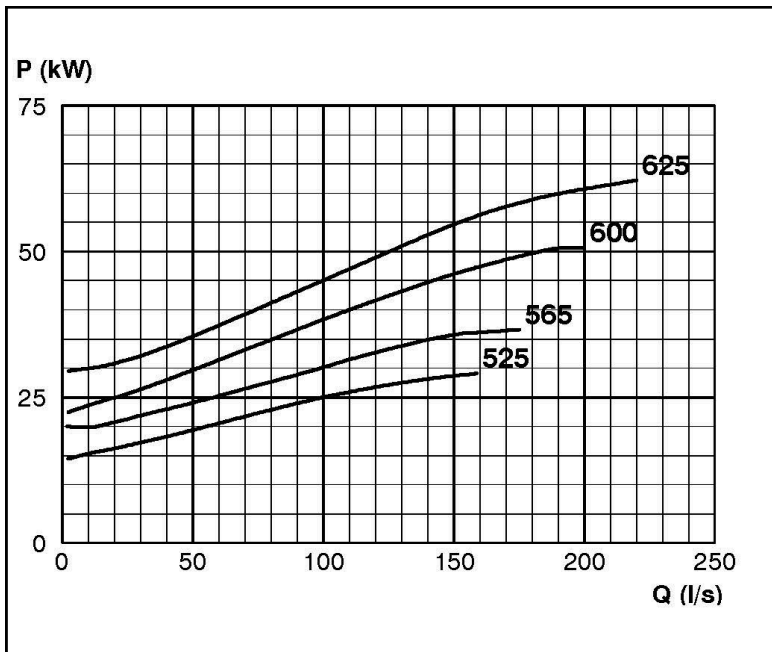
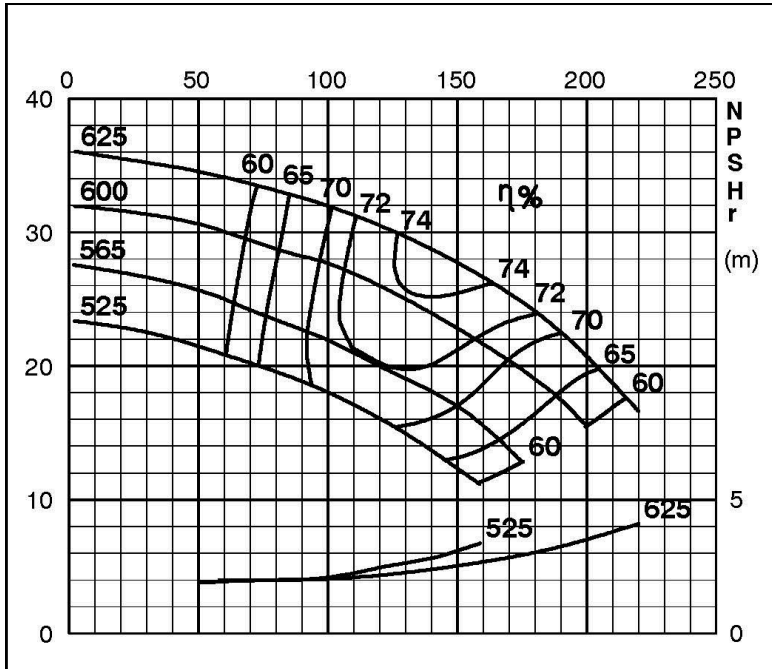
ISP Impeller 283938 OPEN B46 Z4

ISRP: Impeller 285452 OPEN B46 Z4, please add the power demand of the degassing unit = 1.3 kW

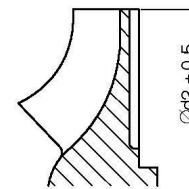
ISSP: Impeller 285452 OPEN B46 Z4, please add the power demand of the degassing unit = 2.0 kW

Performance Curve - ISP200-600-O-740

740 rpm



IMPELLER DIA
Ød ₂ (mm)
625
620
615
610
605
600
595
590
585
580
575
570
565
560
555
550
545
540
535
530
525



RET13937

Exclusively Distributed by