

TECHNICAL SPECIFICATIONS



ISP Process Pumps - ISP250-315 (300-250-315)

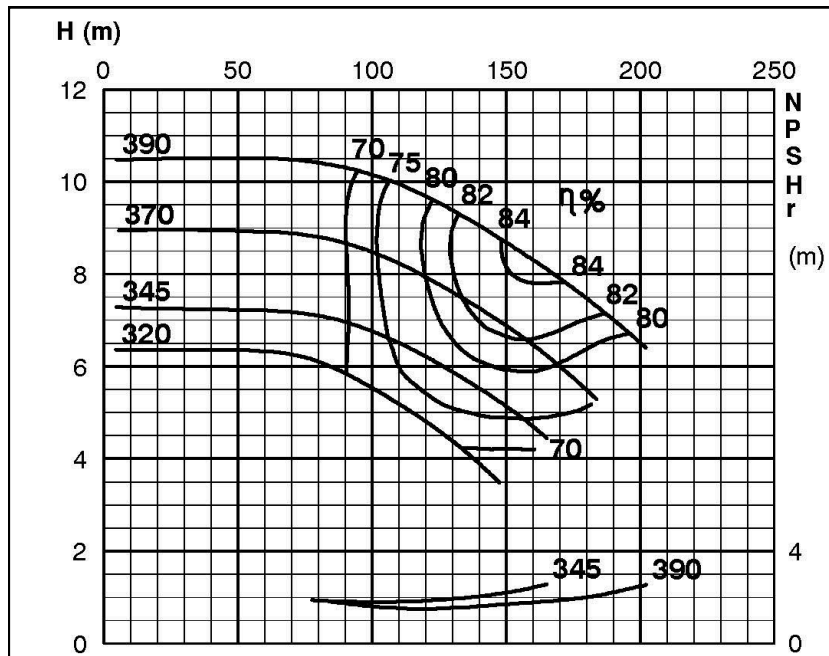
ISP Impeller 283888 OPEN B64 Z5

ARP: Impeller 285269 OPEN B64 Z5, Please add the power demand of the degassing unit = 1.3 kW

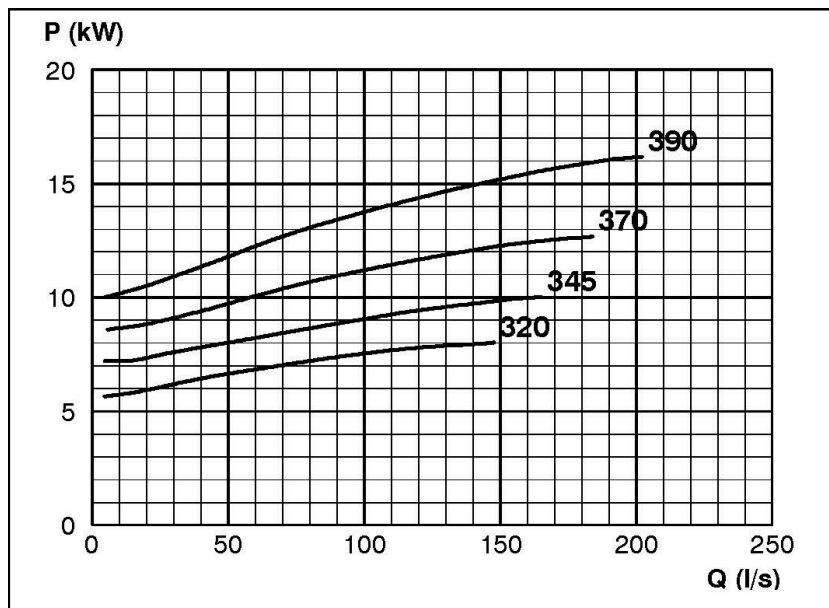
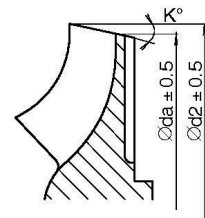
ASP: Impeller 285269 OPEN B64 Z5, Please add the power demand of the degassing unit = 0.3 kW

Performance Curve - ISP250-315-O-730

730 rpm



IMPELLER DIA		
∅d ₂ (mm)	K°	∅d ₁ (mm)
390	9	370.0
385	9	364.8
380	10	357.3
375	10	352.1
370	11	344.4
365	11	339.0
360	12	331.3
355	13	323.5
350	14	315.6
345	15	307.7
340	16	299.8
335	17	291.4
330	18	283.0
325	19	274.5
320	20	266.0



RET13921