

TECHNICAL SPECIFICATIONS



ISP Process Pumps - ISP300-315 (350-300-315)

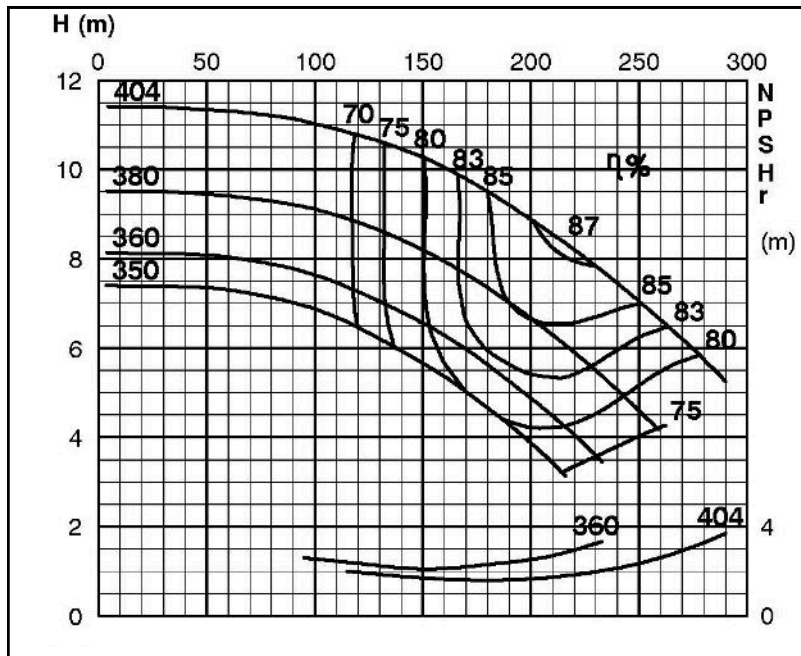
ISP Impeller 283889 OPEN B72 Z6

ISRP: Impeller 285270 OPEN B72 Z6, please add the power demand of the degassing unit = 3.3 kW

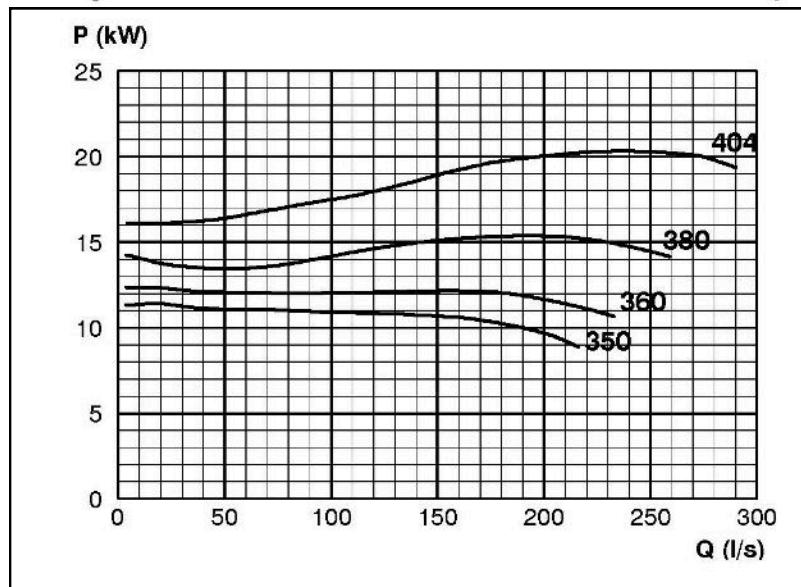
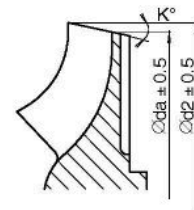
ISSP: Impeller 285270 OPEN B72 Z6, please add the power demand of the degassing unit = 1.2 kW

Performance Curve - ISP300-315-O-730

730 rpm



IMPELLER DIA		
∅d ₂ (mm)	K°	∅d ₃ (mm)
404	13	371.7
400	13	367.2
395	14	359.2
390	14	354.0
385	15	346.2
380	16	338.1
375	17	330.0
370	18	321.8
365	19	313.6
360	20	304.9
355	22	293.6
350	24	282.1



RET13922