

TECHNICAL SPECIFICATIONS



ISP Process Pumps - ISP300-500 (350-300-500)

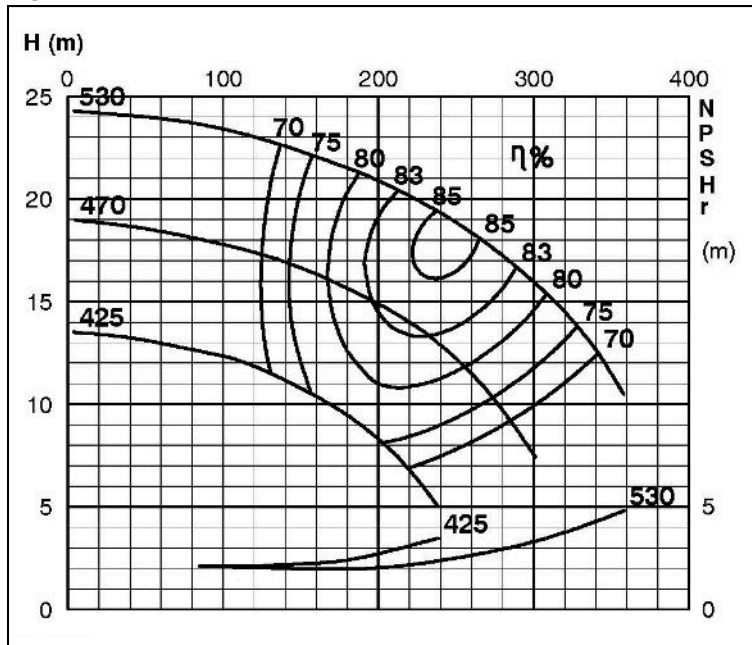
ISP Impeller 283899 OPEN B64 Z5

ARP: Impeller 285280 OPEN B64 Z5, please add the power demand of the degassing unit = 0.7 kW

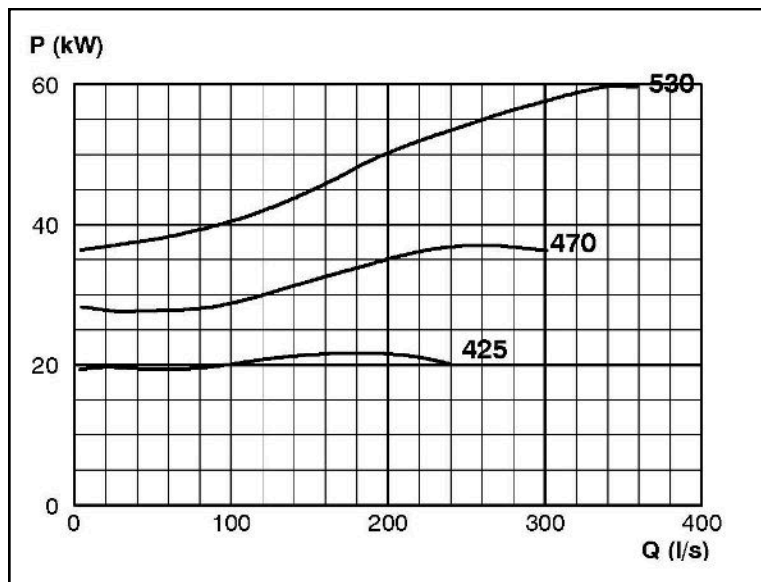
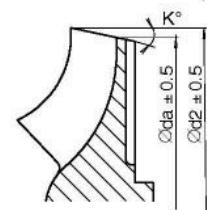
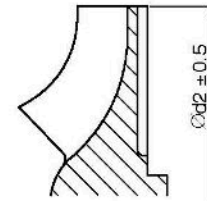
ASP: Impeller 285280 OPEN B64 Z5, please add the power demand of the degassing unit = 2.0 kW

Performance Curve - ISP300-500-O-740

740 rpm



IMPELLER DIA		
∅d ₂ (mm)	K°	∅d ₃ (mm)
530		
525		
520		
515		
510		
505		
500		
495		
490		
485		
480		
475		
470		
465	1	462,6
460	2	455,1
455	3	447,6
450	4	440,0
445	5	432,4
440	6	424,7
435	7	417,0
430	8	409,1
425	10	398,6



RET13933