

## TECHNICAL SPECIFICATIONS

### Retroc-Fit ISP Process Pumps - ISP300-600 (400-300-600)

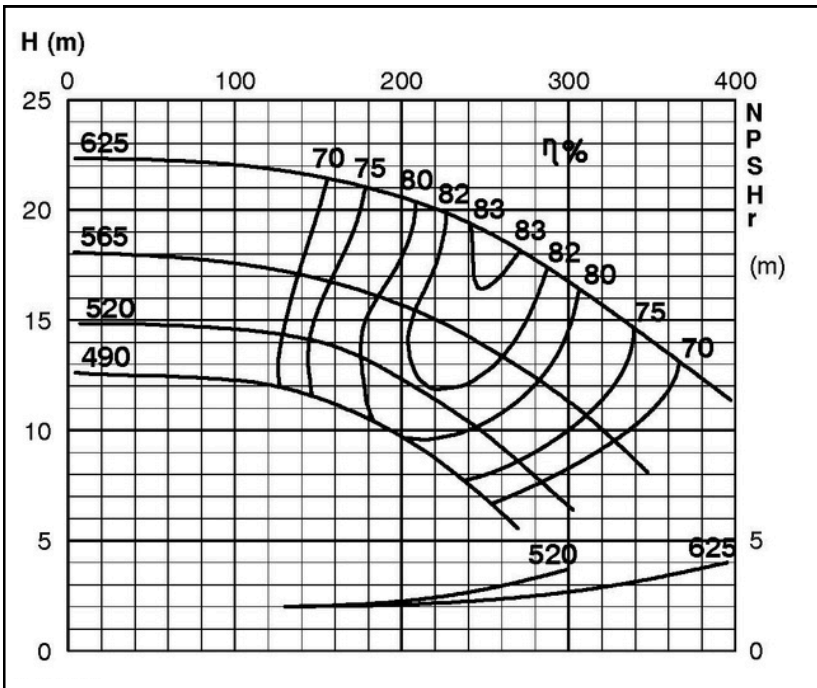
#### ISP Impeller 283940 OPEN B67 Z5

ISRP: Impeller 285454 OPEN B67 Z5, please add the power demand of the degassing unit = 0.7 kW

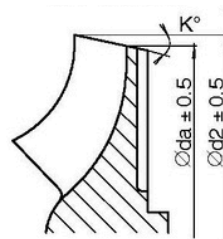
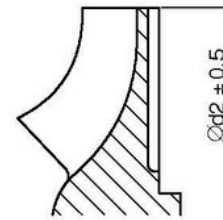
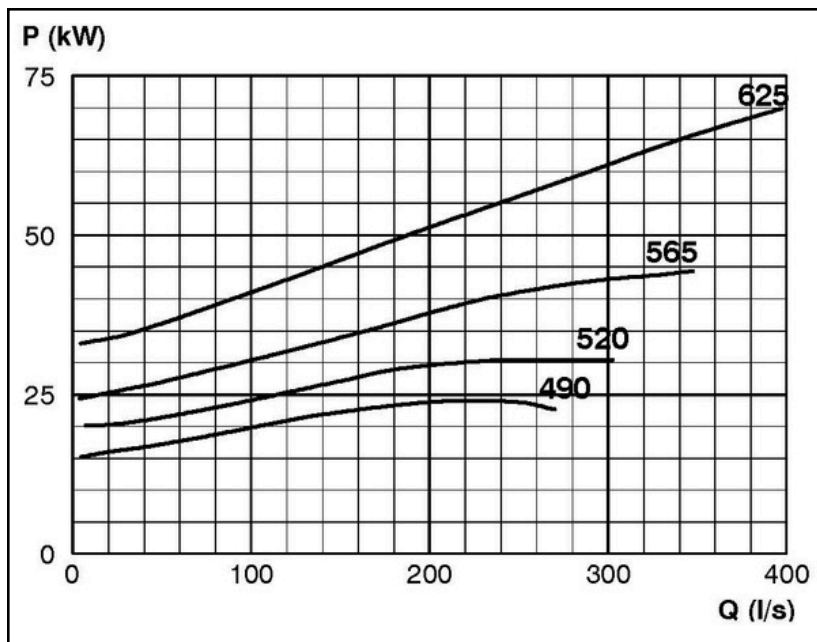
ISSP: Impeller 285454 OPEN B67 Z5, please add the power demand of the degassing unit = 1.8 kW

#### Performance Curve - ISP300-600-O-590

590 rpm



IMPELLER DIA		
$\varnothing d_2$ (mm)	K°	$\varnothing d_a$ (mm)
625		
620		
615		
610		
605		
600		
595		
590		
585		
580		
575		
570		
565		
560		
555		
550		
545		
540		
535		
530		
525	1	522
520	2	515
515	3	507
510	4	501
505	4.5	493
500	5	486
495	5.5	479
490	6	473



RET13953