

Retroc-Fit

Pumps

TECHNICAL SPECIFICATIONS



ISP Process Pumps - ISP250-600 (300-250-600)

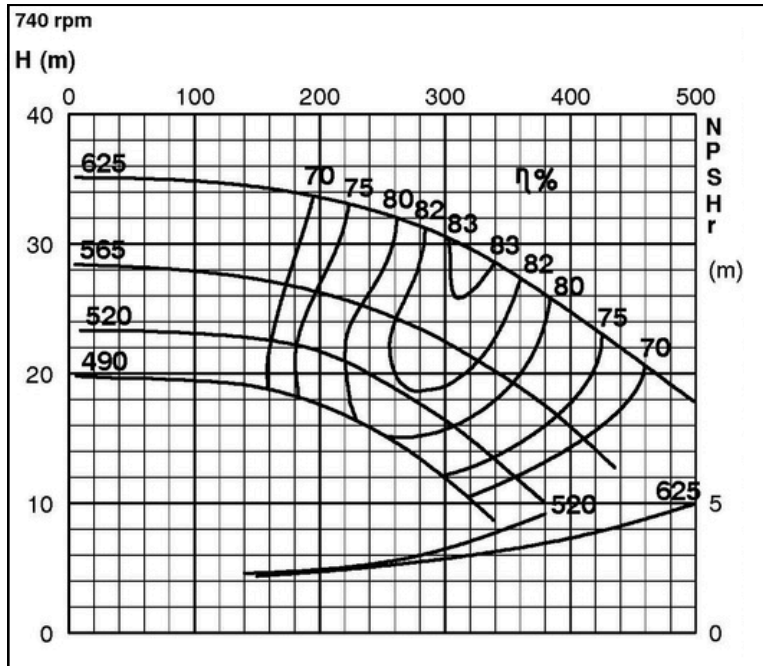
ISP Impeller 283938 OPEN B46 Z4

ISRP: Impeller 285454 OPEN B67 Z5, please add the power demand of the degassing unit = 1.3 kW

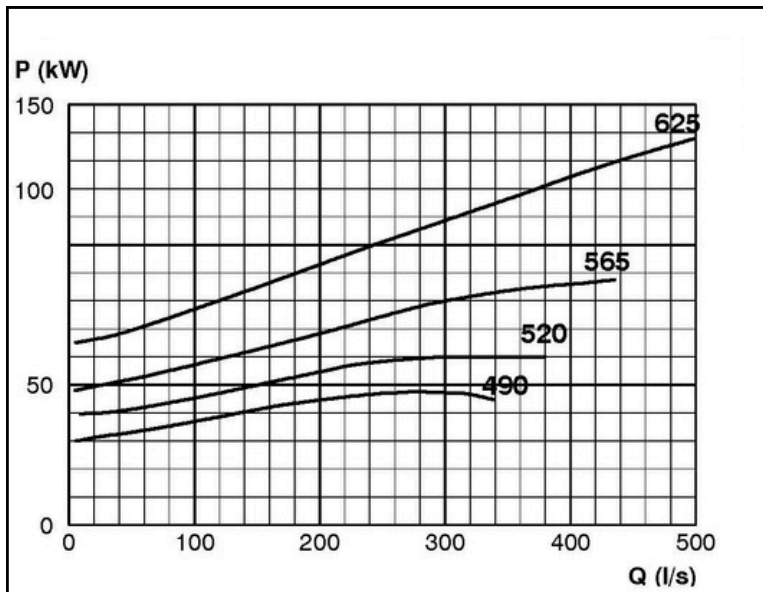
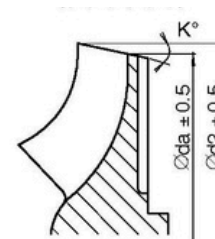
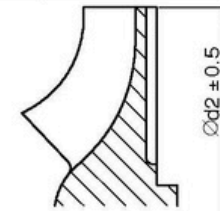
ISSP: Impeller 285454 OPEN B67 Z5, please add the power demand of the degassing unit = 2.0 kW

Performance Curve - ISP250-600-O-740

740 rpm



IMPELLER DIA		
∅d ₂ (mm)	K°	∅d _a (mm)
625		
620		
615		
610		
605		
600		
595		
590		
585		
580		
575		
570		
565		
560		
555		
550		
545		
540		
535		
530		
525	1	522
520	2	515
515	3	507
510	4	501
505	4.5	493
500	5	486
495	5.5	479
490	6	473



RET13939