

TECHNICAL SPECIFICATIONS

ISP Process Pumps - ISP100-400 (125-100-400)



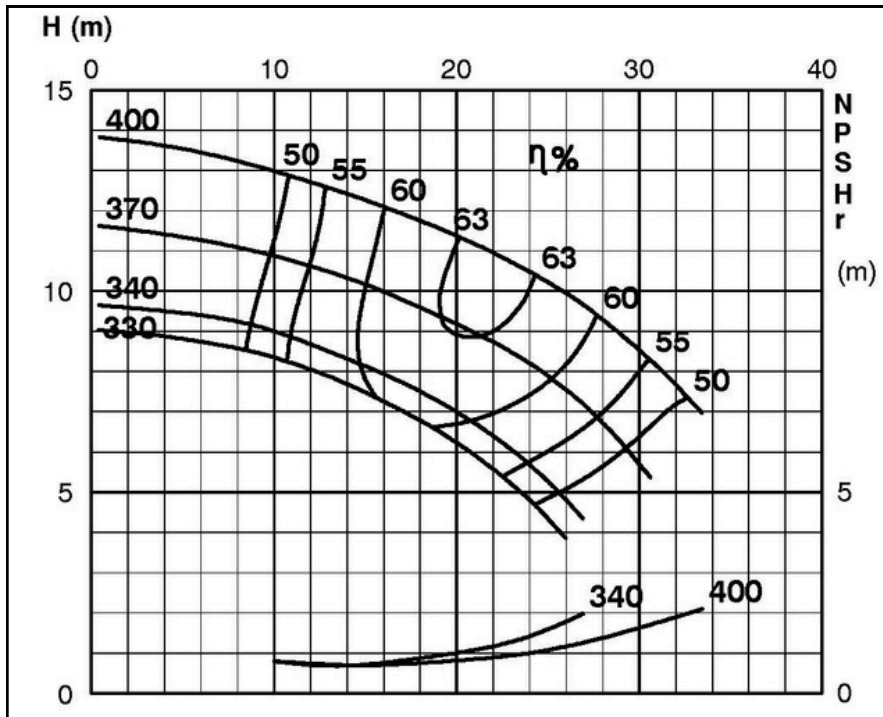
ISP Impeller 283882 OPEN B18 Z4

ISRP: Impeller 285263 OPEN B18 Z4, please add the power demand of the degassing unit = 0.3 kW

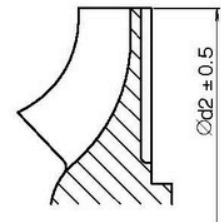
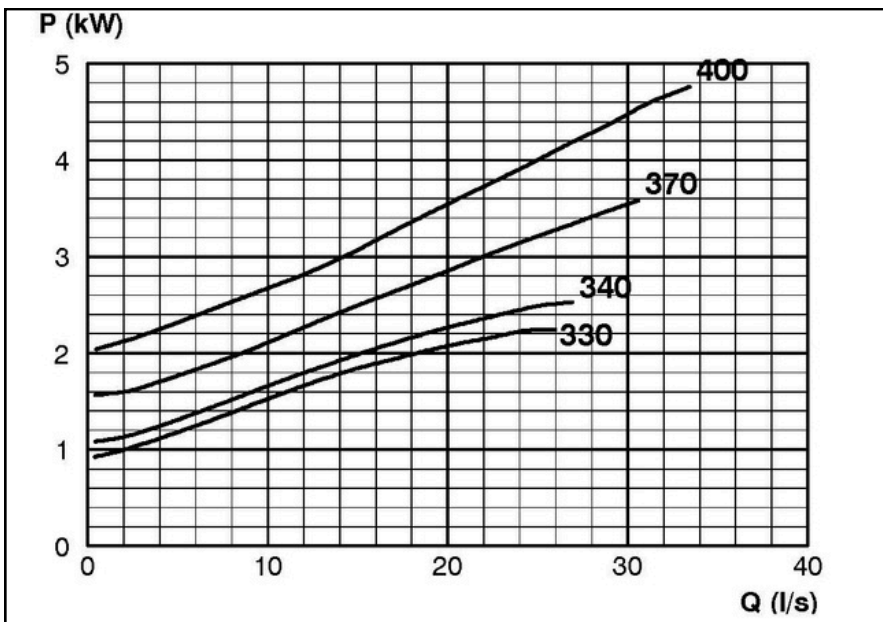
ISSP: Impeller 285263 OPEN B18 Z4, please add the power demand of the degassing unit = 1.0 kW

Performance Curve - ISP100-400-O-710

710 rpm



IMPELLER DIA
∅d ₂ (mm)
400
395
390
385
380
375
370
365
360
355
350
345
340
335
330



RET13919