

TECHNICAL SPECIFICATIONS



ISP Process Pumps - ISP100-500 (200-100-500)

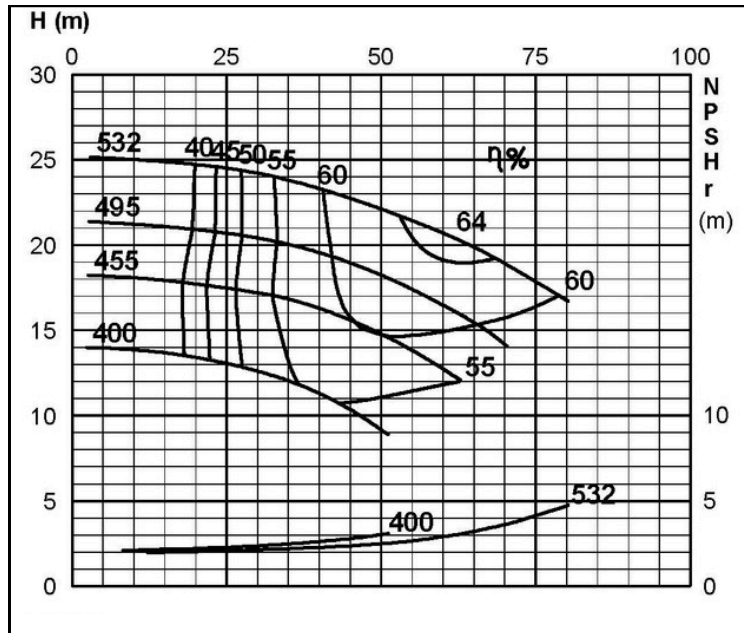
ISP Impeller 285944 OPEN B24 Z4

IRSP: Impeller 286058 OPEN B24 Z4, please add the power demand of the degassing unit = 0.7 kW

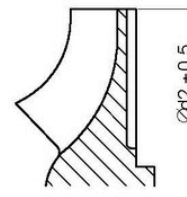
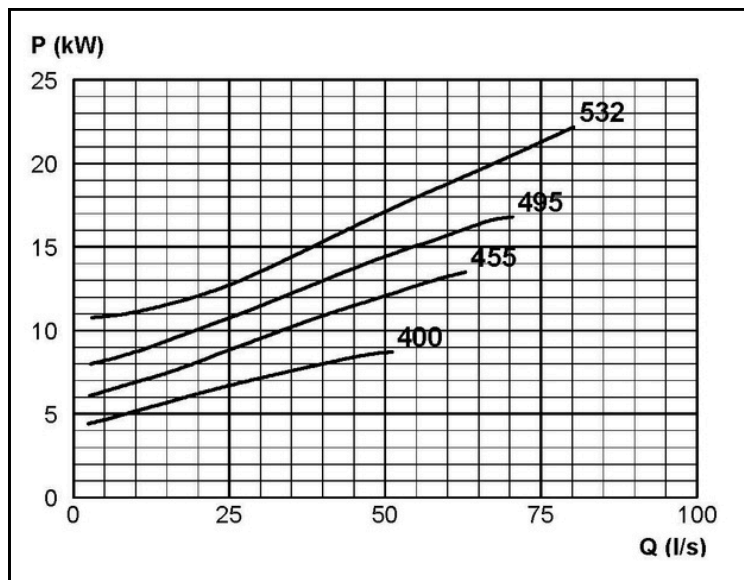
ISSP: Impeller 286058 OPEN B24 Z4, please add the power demand of the degassing unit = 2.0 kW

Performance Curve - ISP100-500-O-730

730 rpm



IMPELLER DIA
∅d ₂ (mm)
532
525
520
515
510
505
500
495
490
485
480
475
470
465
460
455
450
445
440
435
430
425
420
415
410
405
400



RET13929