

## TECHNICAL SPECIFICATIONS



### ISP Process Pumps - ISP150-500 (250-150-500)

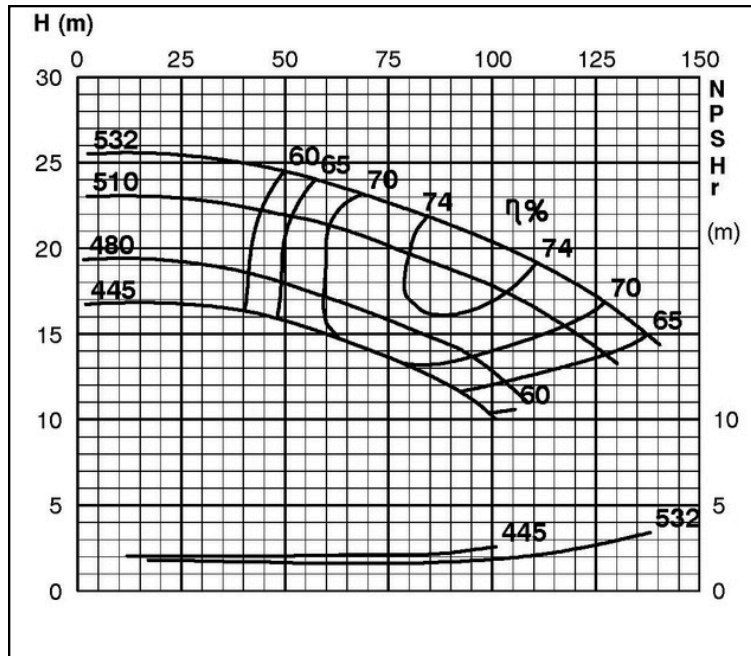
#### ISP Impeller 283896 OPEN B40 Z4

IRSP: Impeller 285277 OPEN B40 Z4, please add the power demand of the degassing unit = 0.7 kW

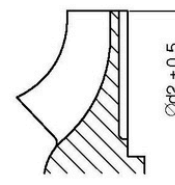
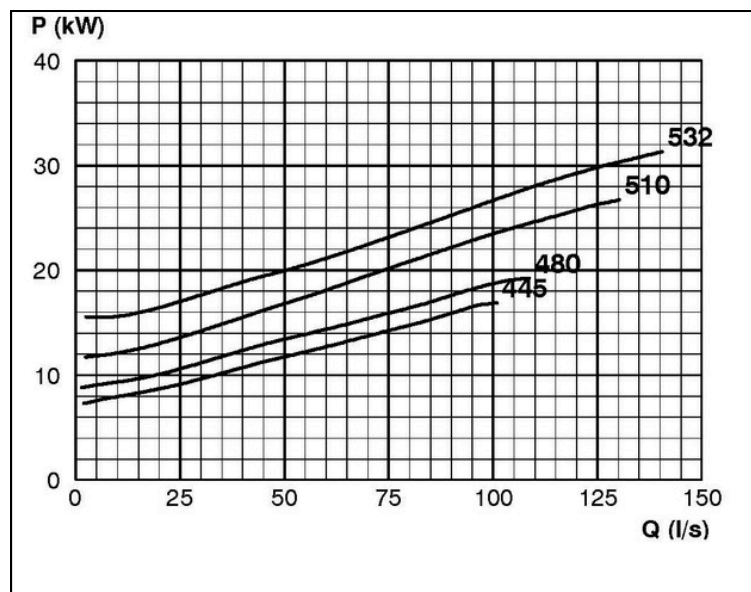
IRSP: Impeller 285277 OPEN B40 Z4, please add the power demand of the degassing unit = 2.0 kW

#### Performance Curve - ISP150-500-O-740

740 rpm



IMPELLER DIA
∅d <sub>2</sub> (mm)
532
525
520
515
510
505
500
495
490
485
480
475
470
465
460
455
450
445



RET13930