

## TECHNICAL SPECIFICATIONS



### ISP Process Pumps - ISP200-600 (300-200-600)

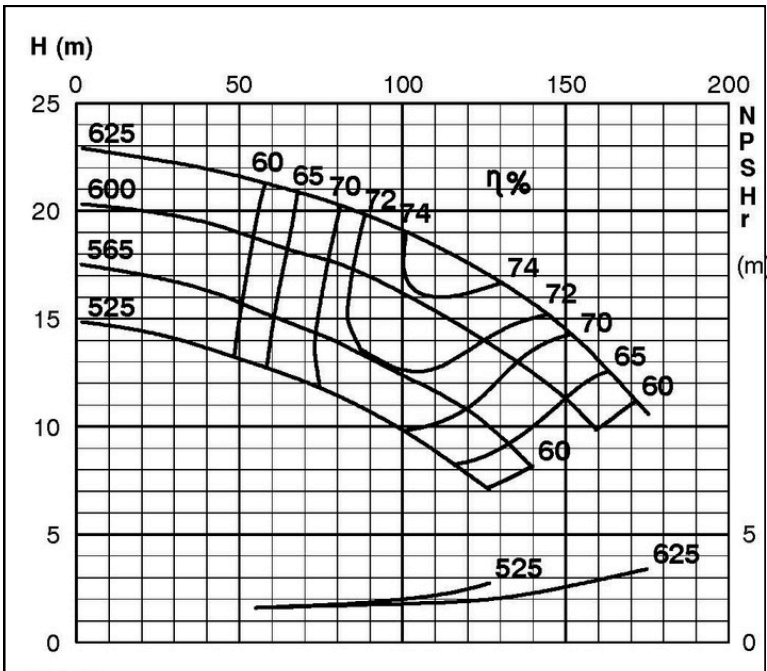
#### ISP Impeller 283938 OPEN B46 Z6

ISRP: Impeller 285452 OPEN B46 Z6, please add the power demand of the degassing unit = 0.7 kW

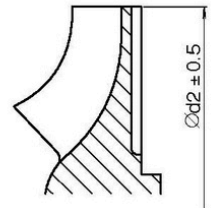
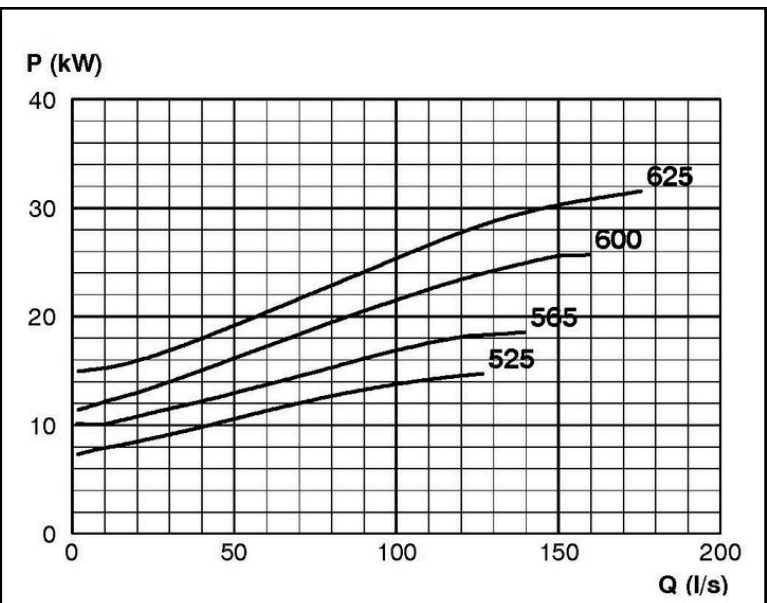
ISSP: Impeller 285452 OPEN B46 Z6, please add the power demand of the degassing unit = 1.8 kW

#### Performance Curve - ISP200-600-O-590

590 rpm



IMPELLER DIA
Ød <sub>2</sub> (mm)
625
620
615
610
605
600
595
590
585
580
575
570
565
560
555
550
545
540
535
530
525



RET13951