

TECHNICAL SPECIFICATIONS



ISP Process Pumps - ISP250-400 (300-250-400)

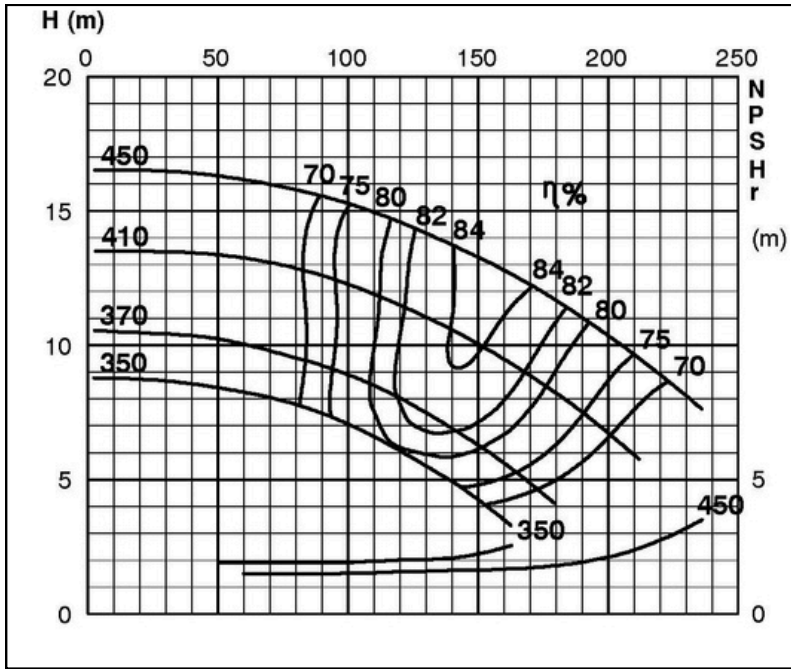
ISP Impeller 283892 OPEN B55 Z5

ISRP: Impeller 285273 OPEN B55 Z5, please add the power demand of the degassing unit = 0.7 kW

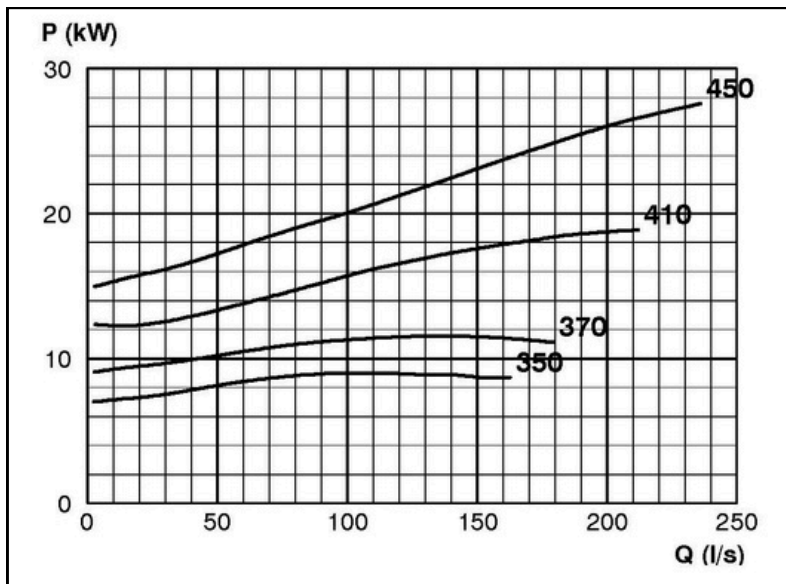
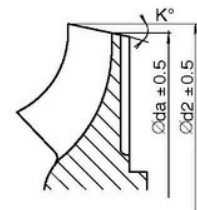
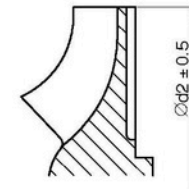
ISSP: Impeller 285273 OPEN B55 Z5, please add the power demand of the degassing unit = 2.0 kW

Performance Curve - ISP250-400-O-730

730 rpm



IMPELLER DIA		
Ød ₂ (mm)	K°	Øda (mm)
450		
445		
440		
435		
430		
425		
420		
415		
410		
405		
400		
395		
390	2	385.9
385	2	380.9
380	3	373.8
375	4	366.5
370	5	359.3
365	6	352.1
360	7	344.8
355	8	337.3
350	9	329.7



RET13925