

## TECHNICAL SPECIFICATIONS



### ISP Process Pumps - ISP250-500 (300-250-500)

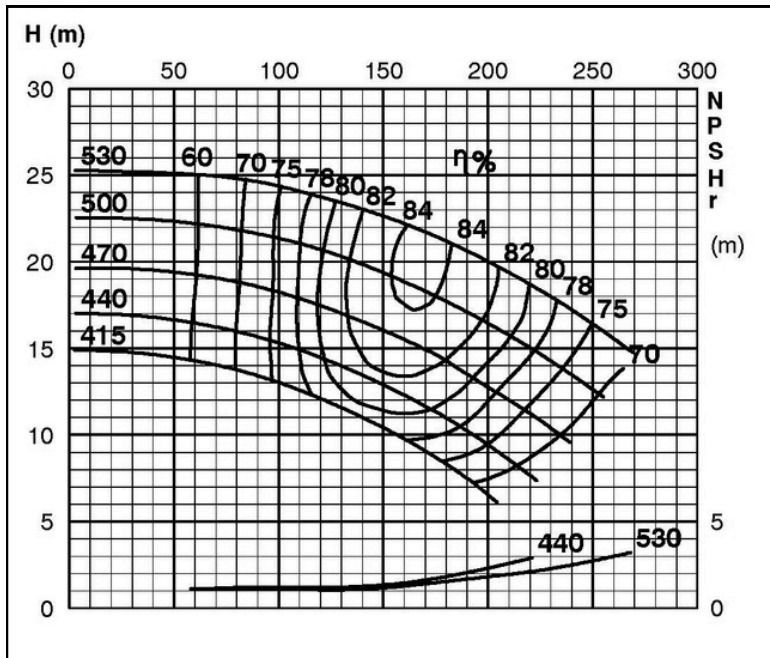
#### ISP Impeller 287904 OPEN B30 Z5

IRSP Impeller 285279 OPEN B49 Z5, please add the power demand of the degassing unit = 0.7 kW

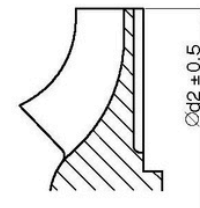
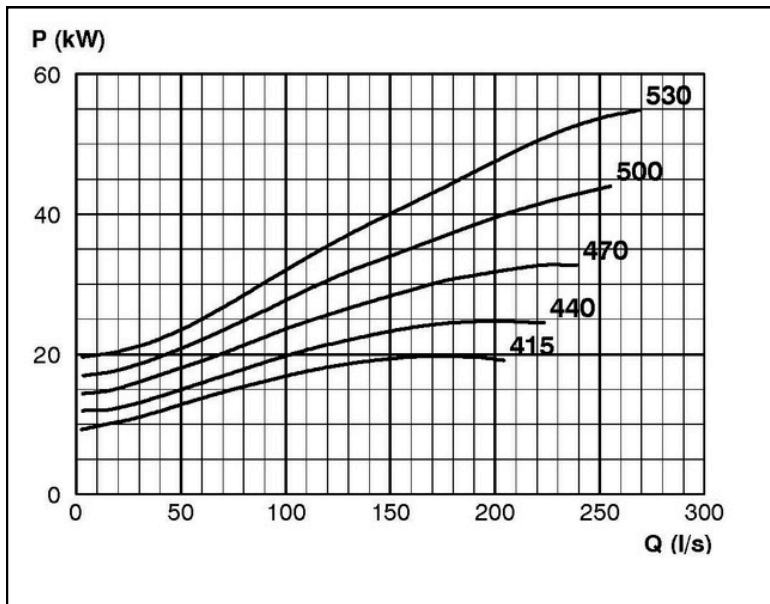
ISSP: Impeller 285279 OPEN B49 Z5, please add the power demand of the degassing unit = 2.0 kW

#### Performance Curve - ISP250-500-O-740

740 rpm



IMPELLER DIA
∅d <sub>2</sub> (mm)
530
525
520
515
510
505
500
495
490
485
480
475
470
465
460
455
450
445
440
435
430
425
420
415



RET13932

Exclusively Distributed by