

## TECHNICAL SPECIFICATIONS



### ISP Process Pumps - ISP250-600 (300-250-600)

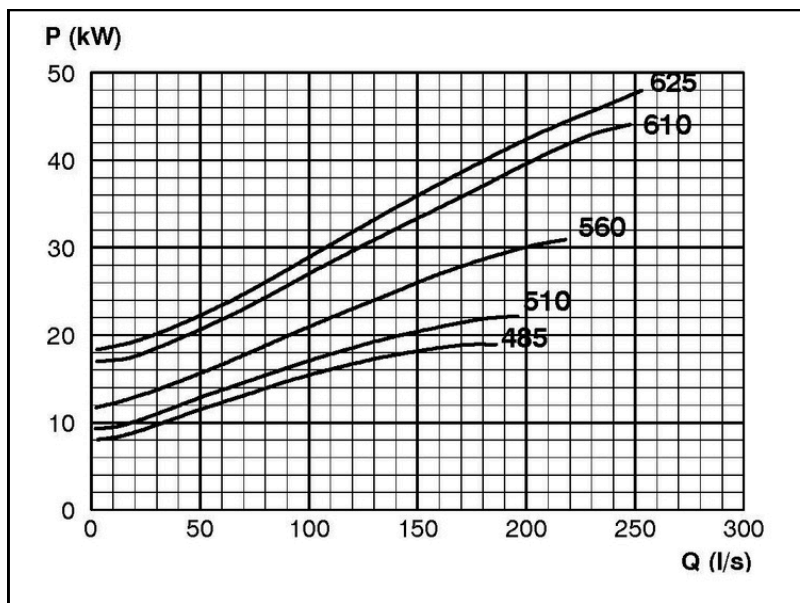
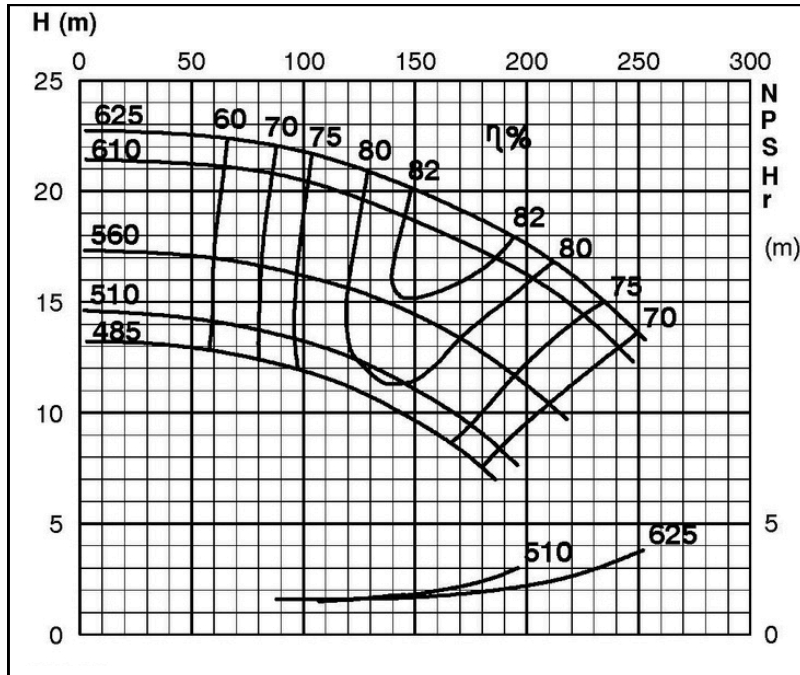
#### ISP Impeller 283939 OPEN B43 Z5

ISRP: Impeller 285453 OPEN B43 Z5, please add the power demand of the degassing unit = 0.7 kW

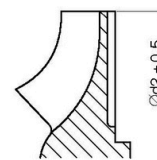
ISSP: Impeller 285453 OPEN B43 Z5, please add the power demand of the degassing unit = 1.8 kW

#### Performance Curve -ISP250-600-O-590

590 rpm



IMPELLER DIA
∅d <sub>2</sub> (mm)
625
620
615
610
605
600
595
590
585
580
575
570
565
560
555
550
545
540
535
530
525
520
515
510
505
500
495
490
485



RET13952