

## TECHNICAL SPECIFICATIONS



### ISP Process Pumps - ISP300-500 (350-300-500)

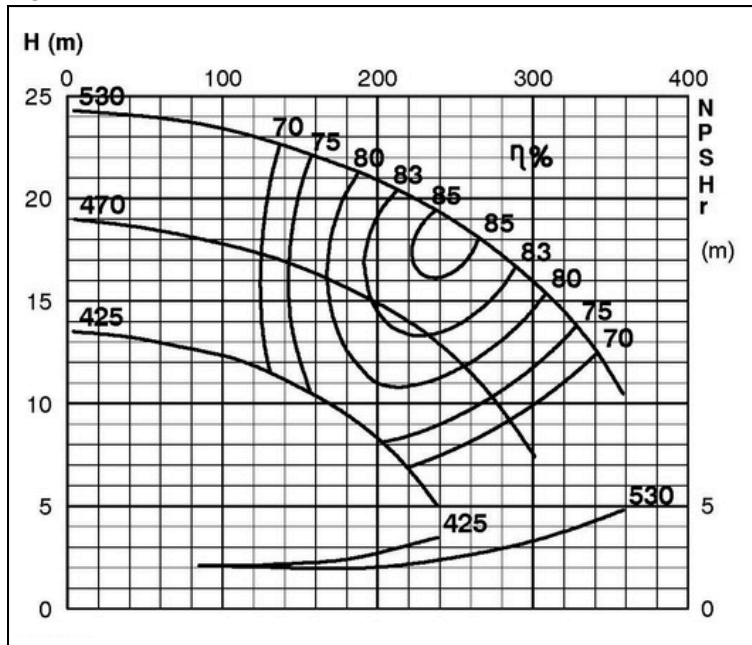
### ISP Impeller 283899 OPEN B64 Z5

ISRP: Impeller 285280 OPEN B64 Z5, please add the power demand of the degassing unit = 0.7 kW

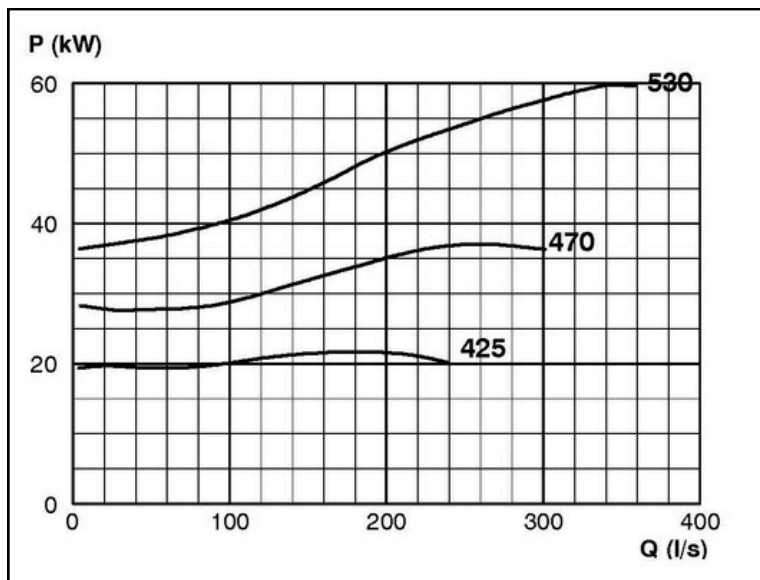
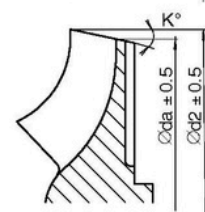
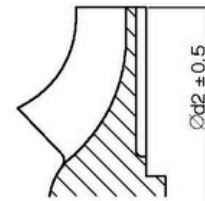
ISSP: Impeller 285280 OPEN B64 Z5, please add the power demand of the degassing unit = 2.0 kW

#### Performance Curve - ISP300-500-O-740

740 rpm



IMPELLER DIA		
∅d <sub>2</sub> (mm)	K°	∅d <sub>1</sub> (mm)
530		
525		
520		
515		
510		
505		
500		
495		
490		
485		
480		
475		
470		
465	1	462.6
460	2	455.1
455	3	447.6
450	4	440.0
445	5	432.4
440	6	424.7
435	7	417.0
430	8	409.1
425	10	398.6



RET13933