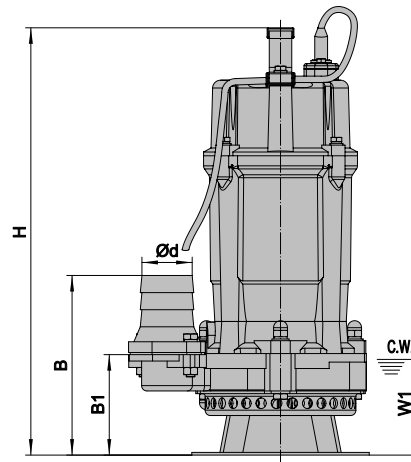
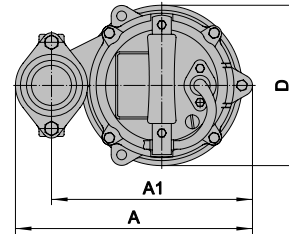
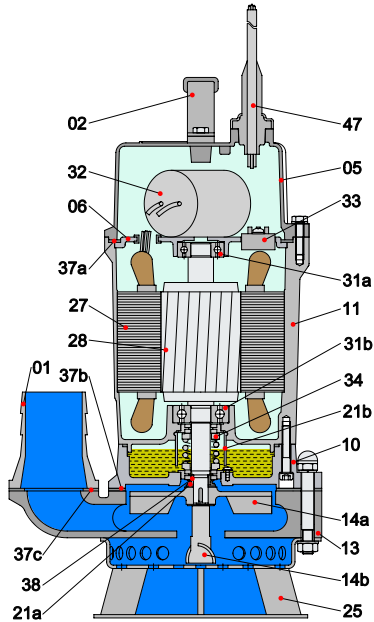


## Dimensions

### SDMA Series - Submersible Slurry Pump



C.W.L.: Continuous running water level

### Material of construction

Item No.	Part Name	Material
01	Hose coupling	Cast Iron
02	Handle	Rubber & Steel
05	Upper cover	Aluminum die casting
06	Up-Bearing house	Cast Iron
10	Seal house	Cast Iron
11	Motor body	Aluminum die casting
13	Pump body	Cast Iron
14a	Impeller	High chrome alloy
14b	Agitator	High chrome alloy
21a	Oil riser	NBR
21b	Sand guard	LDPE
25	Strainer	Steel

Item No.	Part Name	Material
27	Stator	
28	Rotor	Shaft: AISI420SS
31a	Bearing	Ball bearing
31b	Bearing	Ball bearing
32	Capacitor	
33	Motor Protector	
34	Mechanical Seal	Ceramic-Sic/Carbon-Ceramic
37a	Gasket	NBR
37b	Gasket	NBR
37c	Gasket	NBR
38	Shaft Sleeve	AISI420SS
47	Cable	H07RN-F

### Dimensions & weights

Model (50/60Hz)	d	A	A1	B	B1	D	H	W1	N.W	G.W	Packing Dimension
	mm	mm	mm	mm	mm	mm	mm	mm	Kg	Kg	mm
SDMA-50-52-.55S2	50	237	201	168	95	160	405	95	15.5	17	455x255x230
SDMA-50-52-.55M2	50	237	201	168	95	160	405	95	14	15.5	455x255x230